



INNOVATIVE SOLUTIONS
PUMPS • MOTORS • CONTROLS

ACCESSORIES CATALOG

9935 SW Commerce Circle
Wilsonville, OR 97070

☎ 866.748.8077

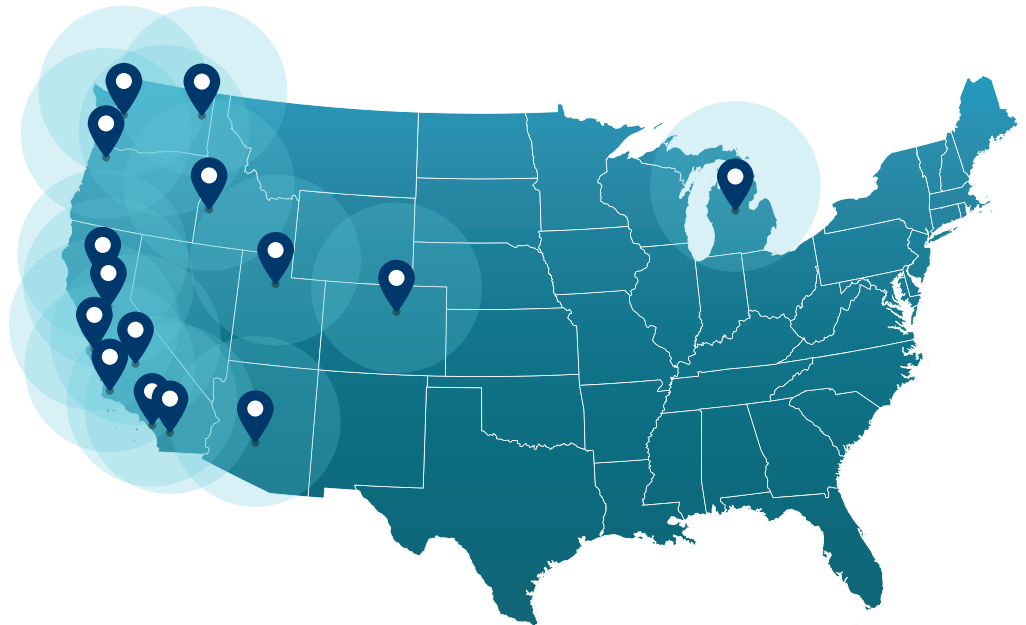
✉ productinfo@mitchellewis.com

🌐 mitchellewis.com

Since 1882, Mitchell Lewis & Staver has focused on technical expertise, superior service, quality products, and dependable delivery; making them today, the leading distributor of value-added pumps, motors, controls, packaged systems and custom engineered solutions for residential water, wastewater, agriculture, irrigation, commercial and industrial applications.

With multiple locations spanning across more than 12 states, and a state-of-the-art UL 508A manufacturing facility where in-house engineers design and build quality standard and custom control panels and packaged systems, Mitchell Lewis & Staver develops innovative solutions in collaboration with customers that help save energy and conserve natural resources.

For more information on Mitchell Lewis & Staver, visit mitchellewis.com



Mitchell Lewis & Staver
9935 SW Commerce Circle
Wilsonville, OR 97070

📞 866.748.8077
✉️ productinfo@mitchellewis.com
🌐 mitchellewis.com

INDEX

A

ABS Well Seals: 38
Air Rite: 4
Air Volume Control/Valves: 4, 5
Alarms: 21, 23
A.O. Smith Motors: 21

B

Baker: 5, 17, 25, 26, 37, 40
Ball Valves: 9
Berkeley: 59, 60
Bleeder Orifice: 5
Boiler Drains: 10
Bronze Fittings: 66

C

Camera Packages: 20
Caps: 26, 69
Cartridge Filters: 13
CentriPro: 46, 47, 54
Check Valves: 6-8, 10
Chemical Feed Pumps 17
Chlorinator: 14
Control Boxes: 53, 54
Coupling: 66, 68
Coyote Motor Protectors: 64
Crosses: 69
Cycle Stop Valves: 55

D

Danfoss: 56
Derricks (hydraulic): 78
Dickens, Campbell Pitless: 25
Dole Flow Valves: 5
Drilling Fluids: 80
Drilling Supplies: 79, 80
Drop Pipe: 73

E

Electrical Controls/VFDs: 56-58
Electrical Tape: 19
Epoxy Steel No Air Cell Tanks: 27

F

Fiberglass Pressure Tanks: 33
Filters 12, 13

Flexcon: 30-32
Float Switches: 21-23
Flomatic: 6, 7, 8, 11
Flow-Thru Pressure Tanks: 32
Foot Valves: 11
Franklin: 48-50, 54, 64

G

Galvanized Fittings: 67-70
Galvanized Pipes: 73
Galvanized Tank Cross: 36
Galvanized Tanks: 27
Gate Valves: 9
G.E. Motor: 51
Goulds Check Valves: 7
Goulds HydroPro Tanks: 28

H

Hand Pumps: 17
Heat Shrink Splice Kits: 19
Hitachi Motors: 44, 45
Holding Tank Alarms: 23
Hose Bibs: 10
Housings (filter): 13
Hunke Hydraulic Derricks: 78

I

ILB: 16
Import Pitless: 25
Intellikit: 57-60
In-Well Pressure Tanks : 33

J

Jet Pump Seals: 38
Johnson: 4, 73

L

Lakos Separators: 15, 16
Line Shaft Turbine Motors: 51
Liquid Level Controls: 23
Low Profile Tanks: 29

M

Maass: 8, 25
Manifolds: 37
McCrometer: 24

INDEX (continued)

Mesh Filter: 12
Mesh Sediment Filters: 12
Mitchell Custom Solutions: 57
Motor Protectors: 63, 64

N

Nipples: 66, 70

P

Pentek: 42, 43, 53, 58-62
Performance Meter: 24
Pipe Clamps: 40
Pipe Elevators: 40
Pitless Adapters: 25
Plastic Cable/Wire Guard: 35
Plug: 66
Poly Pipe & Fittings: 72
Poly Rope: 35
Powers Well Sounder: 40
Pressure Controllers: 56
Pressure Gauges: 20
Pressure Relief Valves: 10
Pressure Switches: 18
Pressure Tanks: 30-34
Pro-Source: 34
Pulsation Dampener: 19
Pump Controllers: 58
PumpMaster: 22
Pump Rod: 17
PVC Ball Valve: 20
PVC Couplings: 73
PVC Drop Pipe: 73
PVC Fittings: 77
PVC Pipe: 71

Q

Quick Tanks: 28

R

Reducing Bushing: 66
Relief Valves: 10

S

Sandmaster: 15
Service Valves: 9, 10
Shur-Align: 6, 73-76
Simmons: 6, 8, 11, 37, 38, 39
SJE Rhombus: 21-23
Snifter Valves: 5

Soft Starts: 56
Spears PVC Fittings: 77
Spin Down Filter: 12
Square D: 18, 19
Square Head Plug: 69
Stainless Clamp: 71
Sta-Kons: 19
Sta-Rite: 61, 62
Stem Less Check Valve: 8
Stenner Chemical Feed Pumps: 17
Submersible Cable: 65
Submersible Pump Motors: 42-50
Submersible Pump Well Seals: 39
Super Switch: 22
Switches & Electricals: 19
Symcom Products: 63

T

Tank Package: 37
Tank Pads: 16
Tanks: 27-34
Tank Saddles: 28
Tank Tees: 36, 37, 66, 67
Torque Arrestors: 35

U

Unions: 67
Universal Tanks: 29
US Motors: 52

V

Variable Frequency Drives: 56, 58
Vent Pipes: 5
Vertical Hollow Shaft Motors: 51
Vertical Tanks: 29

W

Warrick: 23
Water Meters: 24
Well Caps: 26
Well-Mate: 29
Well Seals: 38, 39
Well-X-Trol Tanks: 33
Wind Power: 40

Y

Yard Hydrants: 37

INTRODUCING



PENTAIR PENTEK^{*} SOLAR DRIVES

PSD15 Key Highlights:

- Normally open/normally closed digital inputs for float switch, pressure switch, etc.
- Inputs one PV array connected in series
- External DC disconnect required
- 6 DIP Switch Settings for voltage, Hz, and dry well settings

Simplifying Solar. **FOR LIFE.**



**CONTACT YOUR
LOCAL BRANCH
FOR PRODUCT
QUOTES AND
INQUIRIES**

Air Volume Controls

Air Volume Control



PP2120



AE 10 Robert Shaw



DWJ

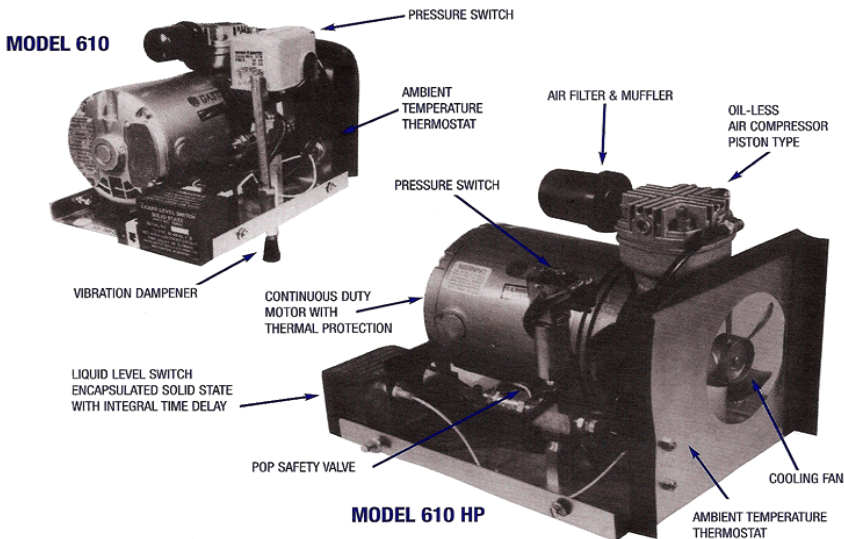


1 AV Armstrong

Air Volume Control w/Fittings	PP2120
Deep Well Air Release Ametek	DWJ
Robert Shaw Air Volume Control	AE10
Johnson Deep Well Air Volume Control	DWJP
Armstrong Air Vent	1AV

Air Rite Whitewater

Air Rite Whitewater Control 20-80 PSI	D610
Air Rite Whitewater Control 41-110 PSI	D610HP
Maass Midwest Charge Air	CA2000
CA2000 Liquid Level Control	CA2000LLC
CA2000 Hose & Fitting Kit	CAHOSEFITTINGKIT



Air Valves & Control Valves

Bleeder Orifice



BV100R



BV75B

1" Rubber Bleeder Orifice	BO100R (BV100-R)
3/4" Brass Bleeder Orifice	BO75B (BV75-B)

Valve with Spring



1/8" Air Valve No Spring	AV125
1/4" Air Valve No Spring	AV250
1/8" Snifter Valve w/Spring	MASV125 (AVS125)
1/4" Snifter Valve w/Spring	MASV250 (AVS250)

Vent Pipes



Baker 1" Screened Air Vent	70PS
Baker 1 1/4" Screened Air Vent	71PS
Baker 2" Screened Air Vent	73PS
Baker 1 1/4" Snorkel Vent	1.25SV
1/2" Steel Vent Pipe (Candy Cane Style)	WV50
1/2" PVC Vent Pipe	VS50
1/2" Copper Well Vent	WV50-C
3/4" Well Vent w/SS Screen	WV505
1/2" Galv. Steel Vent Pipe	VP50

Dole® Flow Control Valves



3/4" FXF	GPM: 1-11.5	(GPM) GC
1" FXF	GPM: 1-30	(GPM) GX

Check Valves

Flomatic 80E NO TAP



80E-ENVIRO CHECK® body is cast from an unleaded alloy with threaded female x female connection. This valve features a non-spin acetyl (1/2" - 2") or unleaded bronze (2 1/2" - 4") poppet, NITRILE (Buna-N) seal and stainless steel spring.
Temp Max: 180°F (80C) Pressure Max: 400 PSI

3/4"	CVF75
1"	4031E (CVF100)
1 1/4" M X 1" F	4221E
1 1/4"	4032E (CVF125)
1 1/4" M X 1 1/4" F	4242E (CVF125MF)
1 1/2"	4033E (CVF150)
2"	4034E (CVF200)
2 1/2"	4035E (CVF250)
3	4036E (CVF300)
4	4037E

Flomatic 80AE 1/8 Inlet Side (1 TAP)



80AE-ENVIRO CHECK® body is cast from an unleaded alloy. This valve features a non-spin acetyl (1/2" - 2") or unleaded bronze (2 1/2" - 4") poppet, NITRILE (Buna-N) seal and stainless steel spring with a 1/8" drilled and tapped hole inlet side.
Temp Max: 180°F (80C) Pressure Max: 400

1"	4041E
1 1/4"	4042E
1 1/2"	4043E
2"	4044E

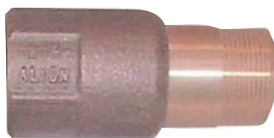
Flomatic 80BE 1/8 Inlet 1/4 Outlet (2 TAP)



80BE-ENVIRO CHECK body is cast from an unleaded alloy with two drilled and tapped holes; 1/8" inlet side and 1/4" outlet side. This valve features a non-spin acetyl (3/4" - 2") or unleaded bronze (2 1/2" - 4") poppet, NITRILE (Buna-N) seal and stainless steel spring.
Temp Max: 180°F (80C) Pressure Max: 400 PSI

1"	4051E (CVF100B)
1 1/4"	4052E (CVF125B)
1 1/2"	4053E (CVF150B)
2"	4054E (CVF200B)
2 1/2"	4055E
3"	4056E
4"	4057E

Shur-Align - Simmons- Flomatic



1" Shur-Align	SA100
1 1/4" Shur-Align	SA125
2" Shur-Align	SA200 (922704)
1" Flomatic	4201XLE
1 1/4" Flomatic	4242XLE

Check Valves

Flomatic Ductile Iron 80DI Female NPT



80DI - High strength ductile iron body with threaded female x female connection. Features a NITRILE (Buna-N) seal, stainless steel spring and fasteners and a ductile iron poppet (1" through 1-1/2" sizes Acetal poppet). Full flow design.

NEW Pressure rating: 600 PSI 4" - 8"
Temp Max: 180°F (80C) Pressure Max: 400 PSI

Benefits:

- Low headloss
- Minimizes water hammer
- Lead-in thread for easy installation
- Prevents pump reversal
- BSP & BSPP threading optional
- 8 round threads optional

1"	2 lbs.	4031DI (CVF100DI)
1 1/4"	1 lbs.	4032DI (CVF125DI)
1 1/2"	2 lbs.	4033DI (CVF150DI)
2"	3 lbs.	7937 (CVF200DI)
2 1/2"	9 lbs.	7936 (CVF250DI)
3"	15 lbs.	7938 (CVF300DI-PLG)
4"	25 lbs.	7939 (CVF400DI-PLG)
5"	46 lbs.	4088 (CVF500DI-PLG)
6"	66 lbs.	4089 (CVF600DI-PLG)
8"	93 lbs.	4090 (CVF800DI-PLG)
3"	PLUG	BOP300
4"	PLUG	BOP400
5"-8"	PLUG	BOP600
1"	VFD	4031DIVFD
1 1/4"	VFD	4032DIVFD
1 1/2"	VFD	4033DIVFD
2"	VFD	7937VFD
2 1/2"	VFD	7936VFD
3"	VFD	7938VFD
4"	VFD	7939VFD

Goulds Ductile Iron Check Valves

3" Ductile Iron	CV03FF
4" Ductile Iron	CV04FF
5" Ductile Iron	CV05FF
6" Ductile Iron	CV06FF

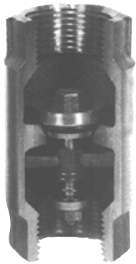
Check Valves

Flomatic Wafer Style Check



2"	5 lbs.	2434
3"	11 lbs.	2435 (CVW300)
4"	18 lbs.	2436 (CVW400)
6"	36 lbs.	2437 (CVW600)
8"	80 lbs.	2438

Simmons Standard Check Valve



1/2" Bronze Lead Free	501SB
3/4" Bronze Lead Free	502SB
1" Bronze Lead Free	503SB
1 1/4" Bronze Lead Free	504SB
1 1/2" Bronze Lead Free	505SB
2" Bronze Lead Free	506SB

Maass Midwest 530 (No TAP) Check Valve



1" Maass Midwest 530 Check Valve	CVM100
1 1/4" Maass Midwest 530 Check Valve	CVM125
1 1/2" Maass Midwest 530 Check Valve	CVM150
2" Maass Midwest 530 Check Valve	CVM200

Service Valves

Brass Gate Valves



1/2" Gate Valve	GV50
3/4" Gate Valve	GV75
1" Gate Valve	GV100
1" Gate Valve Lead Free	GV100LF
1 1/4" Gate Valve	GV125
1 1/4" Gate Valve Lead Free	GV125LF
1 1/2" Gate Valve	GV150
1 1/2" Gate Valve Lead Free	GV150LF
2" Gate Valve	GV200
2" Gate Valve Lead Free	GV200LF
3" Gate Valve	GV300
3" Gate Valve Lead Free	GV300LF
4" Gate Valve	GV400
4" Gate Valve Lead Free	GV400LF

Brass Ball Valves



1/2" Ball Valve	BV50
3/4" Ball Valve	BV75
1" Ball Valve	BV100
1" Ball Valve Lead Free	BV100LF
1 1/4" Ball Valve	BV125
1 1/4" Ball Valve Lead Free	BV125LF
1 1/2" Ball Valve	BV150
1 1/2" Ball Valve Lead Free	BV150LF
2" Ball Valve	BV200
2" Ball Valve Lead Free	BV200LF
3" Ball Valve	BV300
3" Ball Valve Lead Free	BV300LF
4" Ball Valve	BV400
4" Ball Valve Lead Free	BV400LF



Service Valves

Brass Hose Bibs



1/2"	HB50
3/4"	HB75

Brass Boiler Drains



1/2"	BD50
3/4"	BD75

Brass Swing Check Valves



3/4"	SCV75
1"	SCV100
1 1/4"	SCV125
1 1/2"	SCV150
2"	SCV200

Relief Valves



PRV75

Zurn-Wilkins

AY McDonald



1/2" 75 PSI	PRV50
3/4" 75 PSI	PRV75
3/4" 100 PSI	PRV100
1" 100 65 PSI	PRV100A
1 1/4" 65 PSI	PRV125
1 1/2" 65 PSI	PRV150
2" 65 PSI	PRV200

ZURN-WILKINS

3/4" Adjustable 25-175 PSI	P1500 (WI7525-175)
3/4" 75 PSI	WI7575
3/4" 125 PSI	WI75125

AY McDonald

1" Preset 75lbs.	6214-140
1 1/4" Preset 65lbs.	6214-142
1 1/2" Preset 65lbs.	6214-144
2" Preset 65lbs.	6214-146

Foot Valves

Brass Foot Valves Import



1/2"	FV50
3/4"	FV75
1"	FV100
1 1/4"	FV125
1 1/2"	FV150
2"	FV200
3"	FV300
4"	FV400

Flomatic 60SE Enviro



3/4"	4100E	FVF75
1"	4101E	FVF100
1 1/4"	4103E	FVF125
1 1/2"	4104E	FVF150
2"	4105E	FVF200
2 1/2"		FVF250
3"	4107E	FVF300
4"	4108E	FVF400

Simmons



3/4"	452SB
1"	453SB
1 1/4"	454SB
1 1/2"	456SB
2"	457SB

Filters

Twist-II-Clean Spin-Down Filters



3/4"	60 Mesh 250 Micron Inline Twist2Clean Filter	T2C-075-60
3/4"	100 Mesh 150 Micron Inline Twist2Clean Filter	T2C-075-100
3/4"	140 Mesh 105 Micron Inline Twist2Clean Filter	T2C-075-140
1"	60 Mesh 250 Micron Inline Twist2Clean Filter	T2C-100-60
1"	100 Mesh 150 Micron Inline Twist2Clean Filter	T2C-100-100
1"	140 Mesh 105 Micron Inline Twist2Clean Filter	T2C-100-140
1.5"	60 Mesh 250 Micron Inline Twist2Clean Filter	T2C-150-60
1.5"	100 Mesh 150 Micron Inline Twist2Clean Filter	T2C-150-100
1.5"	140 Mesh 105 Micron Inline Twist2Clean Filter	T2C-150-140

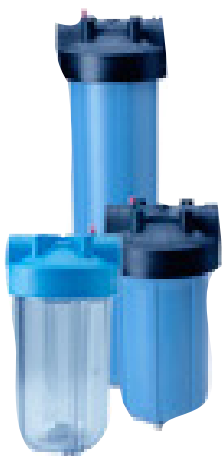
Action Machine-Action Spin Down Mesh Sediment Filters



1" 100	AFI1.0-100
1" 150	AFI1.0-150
1" 200	AFI1.0-200
1 1/2" 50	AFI1.5-50
1 1/2" 100	AFI1.5-100
1 1/2" 150	AFI1.5-150
1 1/2" 200	AFI1.5-200
2" 32	AFI2.0-32
2" 50	AFI2.0-50
2" 100	AFI2.0-100
2" 150	AFI2.0-150
2" 200	AFI2.0-200

Cartridge Filters & Housings

Filters and Housings



4 1/2" x 10" Filter Housing	I/O	Color
W1PR (W10PR)	1"	Gray
PRO-903	1"	Opaque
HJ10-1	1"	Gray
FHC-150	1 1/2"	Clear
W15PR	1 1/2"	Gray
2 1/2" x 10" Filter Housing	I/O	Color
H34	3/4"	Clear
PRO-901	3/4"	Clear
Accessories		
BRK-J (Mounting Bracket 4 1/2")		
WR500 (Wrench)		

Cartridges

		Part Number	Description
		4 / 1/2" 10"	
		PPJ1005	5 Micron Pleated Cartridge
		PPJ1020	20 Micron Pleated Cartridge
		PPJ1050	50 Micron Pleated Cartridge
		GACJ10	Carbon Filter
		PRO-30	30 Micron Pleated
		Part Number	Description
		2 / 1/2" 10"	
		1PP10 (SW1005)	1 Micron String Wound
		PP1020	20 Micron Pleated cellulose
		PP1005	20 Micron Pleated Paper
		PRO-21	20 Micron String Wound
		PRO-23	2 Micron Carbon Filter
		CB1005-24	5 Micron Cellulose
		PP1050	50 Micron Pleated Filter
		Part Number	Description
		2 / 1/2" 20"	
		1PP20	1 Micron String Wound
		5PP20	5 Micron String Wound



Chlorinator

Chlorinator B & B



B & B Chlorinator 115 Volt 10 lb. Drum	MARK1-115
B & B Chlorinator 220 Volt 10 lb. Drum	MARK1-220
5 lb. Bucket Chlorine Pellets	5LBWELLSANITIZER
50 lb. Chlorine Pellets (2X25)	50LBCHLORPELL
Mounting Bracket	B&BMOUNTING
5 lb. Jar Chlorine Pellets	C21005
3.5 lb. Jar Chlorine Pellets	C221003S

B & B Chlorinator Replacement Parts

B & B Chlorinator 115 Volt Control Box	B&B 115V CONTROL BOX
B & B Chlorinator 220 Volt 10 lb. Drum	B&B 230V CONTROL BOX

Tank Pads



24" X 24" X 3" Tank Pad	TP24-3
36" X 36" X 3" Tank Pad	TP36-3

Lakos Separators

Sandmaster



H ₂ O-5	5-10	1/2"	H2O-5
H ₂ O-10	10-20	3/4"	H2O-10
H ₂ O-20	20-32	1"	H2O-20
H ₂ O-30	30-48	1 1/4"	H2O-30
H ₂ O-45	45-70	1 1/2"	H2O-45

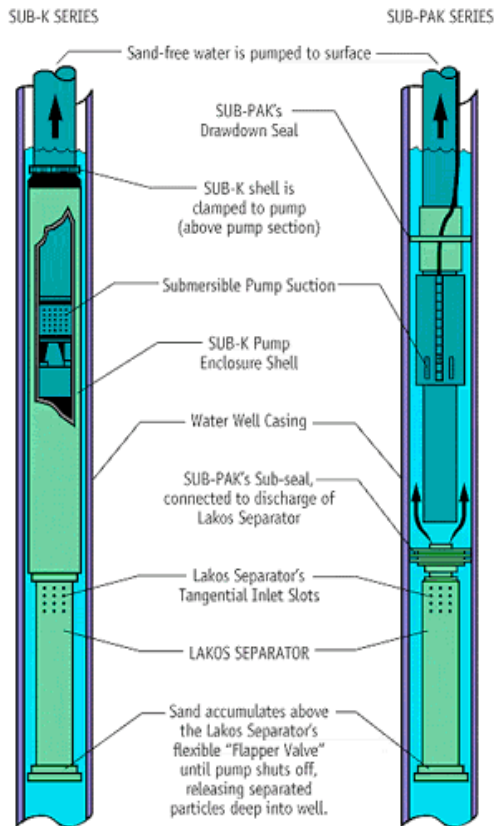
Sandmaster Plus



SMP-10	10-20	3/4"	SMP-10
SMP-20	20-32	1"	SMP-20
SMP-30	30-48	1 1/4"	SMP-30
SMP-45	45-70	1 1/4"	SMP-45

Lakos Sub K Series

LAKOS SUB-K SERIES



Model	GPM
SUB-28-4-PAK	14-28
SUB-12-5-K	5-12
SUB-16-5-K	10-16
SUB-28-5-K	14-28
SUB-52-5-K	24-52

Lakos Separators

Automatic Purging System

Model	Size	Part Number
AP-75-MBV	3/4"	AP-75-MBV

Mounting Hardware for H2O Series

Model H ₂ O-5 & H ₂ O-10	MBK-0510
Model H ₂ O-20, 30 & 45	MBK-2045
Model ILB 100/125/150	MBCK-033
Model ILB 200/250	MBCK-052

ILB Sand Separator



10-20 GPM	ILB-0075
19-32 GPM	ILB-0100
28-48 GPM	ILB-0125
45-70 GPM	ILB-0150
65-108 GPM	ILB-0200

Chemical Feed Pumps

Stenner Chemical feed Pumps



10GPD Fixed Speed 110 V 1/4" Tube	45MFH2A1SUAA
10GPD Adj. Speed 110 V 3/8" Tube	45MJH2A3S
10GPD Adj. Speed 220 V 3/8" Tube	45MJH2B3STAA
17GPD Adj. Speed 110 V 1/4" Tube	85MJH2A1S
17GPD Adj. Speed 220 V 1/4" Tube	85MJH2B1S
40GPD Adj. Speed 110 V 3/8" Tube	85MJH7A3STAA
40GPD Adj. Speed 220 V 3/8" Tube	85MJH7B35STAA
Pump with 30 Gallon Tank	S3N45MJH2A1S
Pump with 30 Gallon Tank	S3N85MJH2B1S
Pump with 15 Gallon Tank	S1N85MJH2A1S
Pump with 15 Gallon Tank	S1N85MJH2B1S
Pump with 15 Gallon Tank	S1N85MJH7A1S

Stenner Accessories



Stenner Pump Control Module .01-1.0	PCM1
Stenner Pump Control Module .05-5	PCM5
#1 Tube for Stenner, 2PK	UCCP201
#2 Tube for Stenner, 2PK	UCCP202
Stenner Check Valve Duckbill Only, 2PK	UCCVDB0
Stenner Check Valve Injector Fitting	UCDB1NJ

Hand Pumps & Force Pumps



11HD HPP10 66MP

Pitcher Pump	HPP10 (19-HP)
Baker Pump w/Siphon Spout	11HD
Hose Adapter	146AD
6" Sealed Pipe Flange	66MP

Pump Rod



Hand Pump Rod price per ft.	7/16"X21' PUMP ROD
Pump Rod Coupling	7/16"X7/16"RODCOUP

Pressure Switches

Square D Type "FSG"

Pressure Range Cutout PSI, 20-80 lbs./Differential PSI 10-30 lbs./Maximum Rating: 1 HP @ 110/220 Single Phase



Preset 20-40	FSG22040	
Preset 30-50	FSG23050	
Preset 40-60	FSG24060	
V	1PH	3PH
115	1.5	2
230	2	2

Square D Type "FYG"

Pressure Switch-Medium Duty Switch



Preset 30-50 9013FYG2J21M4	FYG2M43050	
Preset 40-60 9013FYG2J24M4	FYG2M44060	
V	1PH	3PH
115	2	3
230	3	5

Square D Type "FSG"

M4 Low Pressure Cutout/
Contacts
Open On Pressure Drop



Preset 30-50 9013FSG2J21-M4	FSG2M43050
Preset 40-60 9013FSG2J24-M4	FSG2M44060
Preset 20-40 9013FSG2M4-J20	FSG2M42040

M5 Reverse Action Low Pressure

Reverse Action w/Reset Lever 40-20 9013FRG2M5-J23	FRG2M54020
Reverse Action w/Reset Lever 50-30 9013FRG2M5-J35	FRG2M55030

Square D Type "GHG"



Preset 40-60 9013GHG2-J24	GHG24060
Preset 60-80 9013GHG2-J25	GHG26080
Preset 70-100 9013GHG2-J29	GHG270100
Preset 90-120 9013GHG2	GHG290120

Pressure Range Cutout PSI, 40-200 lbs./Differential PSI 18-40 lbs./Maximum Rating: 3HP Single Phase/5HP Three Phase

Switches & Electrical

Square D Type "GSG"

Pressure Range Cutout PSI, 20-80 lbs./Differential PSI 12-35 lbs./Maximum Rating:3HP Single Phase/5HP Three Phase



Preset 30-50	9013GSG-J21	GSG23050
Preset 40-60	9013GSG2-J24	GSG24060
Preset 60-80	9013GSG2-J25	GSG26080
Preset 80-100		GSG280100

Square D Type "FRG-M3"/Reverse Action/Contacts Close on Pressure Rise

Cut Out PSI 20-80 lbs.

40-20	9013FRG2M3-J23	FRG2M34020
-------	----------------	------------

Pulsation Dampener 1/4 Inch



PGA-BS-E		SLP2404047
Boshart Snubber		B40-P30
1/4" Brass Pressure Snubber		SNUBBER

Heat Shrink Splice Kits & Sta-Kons



#14-12-10 Kit	SK10-C
#8 Kit	SK8-C
#6 Kit	SK6-C
#4 Kit	SK4-C
#2 Kit	SK2-C
0/4 Black	SK0-4
00/4 Black	SK00-4
000/4 Black	SK000-4
0000/4 Black	SK0000-4
STAKON Connectors	IN STOCK

Electrical Tape



3/4" X 520" Teflon Tape	TT75-520
3/4" x 60' Electrical Tape	ET75 (ET75-60)
Rubber Splicing Tape	RUBBERTAPE
2" Pipe Wrap Tape	PW2 (TA33PW21)
2" Wide Green Wrap Tape	ET200

Pressure Gauges / Camera Packages

Pressure Gauges



100 PSI 1/4" Bottom Gauge	PG100
200 PSI 1/4" Bottom Gauge	PG200
300 PSI 1/4" Bottom Gauge	PG300
2" 100 PSI Liquid Filled Gauge	PG100G (PG100GL)
2 1/2" 100 PSI Liquid Filled Gauge	LF100 (PG100GL)
2 1/2" 160 PSI Liquid Filled Gauge	LF160
2 1/2" 200 PSI Liquid Filled Gauge	LF200 (PG200GL)
2 1/2" 300 PSI Liquid Filled Gauge	LF300
2 1/2" 400 PSI Liquid Filled Gauge	LF400
Water Level Gauge 0-390	PG45-WL
1/4" Back Mount 100 PSI Gauge	PG100B (PG100BM)

Camera Packages



300 ft cable length	WV-C300C manual crank
500 ft cable length	WV-C500C manual crank
700 ft cable length	WV-C700C manual crank
1000 ft cable length	WV-C1000C manual crank
1250 ft cable length	WV-C1250C manual crank
1500 ft cable length	WV-C1500C manual crank
300 ft cable length	WV-C300FE manual crank
500 ft cable length	WV-C500FE manual crank
700 ft cable length	WV-C700FE manual crank
1000 ft cable length	WV-C1000FE manual crank
1250 ft cable length	WV-C1250FE manual crank
1500 ft cable length	WV-C1500FE manual crank
300 ft cable length	WV-C300SDM manual crank
500 ft cable length	WV-C500SDM manual crank
700 ft cable length	WV-C700SDM manual crank
1000 ft cable length	WV-C1000SDM manual crank
1250 ft cable length	WV-C1250SDM manual crank
1500 ft cable length	WV-C1500SDM manual crank
1000 ft cable length	WV-C1000M motorized crank
1250 ft cable length	WV-C1250M motorized crank
1500 ft cable length	WV-C1500M motorized crank

Float Switches & Alarms

Tank Alert I Alarm System



	Shipping Weight	
120 VAC		
1TAXT-01X (120 VAC High Level)	3.58 lbs.	1005141P
101-01L (120 VAC Low Level)	3.58 lbs.	1003365
TANK ALERT XT (120 VAC High Level)		SJETANKALERT1
Cable Weight		1002230

SJE Vertical Master® Pump Switch



Pump Down Only	Shipping Weight	
10VM1WP	1.73 lbs.	1003590
15VM1WP	2.08 lbs.	1003769
20VM1WP	2.43 lbs.	1003770
20VMWOP	2.35 lbs.	1003778
30VM1WP	3.13 lbs.	1003771

Junior Super Single® Pump Switch



Pump Down	Pump Up	Shipping Weight	
10JSD1WP		1.45 lbs.	1001896
10JSD2WP		1.48 lbs.	1001914
10JSDWOP		1.37 lbs.	1001916
15JSD1WP		1.77 lbs.	1001817
15JSD2WP		1.81 lbs.	1001926
15JSDWOP		1.68 lbs.	1001928
20JSD1WP		2.11 lbs.	1001898
20JSD2WP		2.14 lbs.	1001937
20JSDWOP		2.03 lbs.	1001939
	10JSU1WP	1.45 lbs.	1001918
	10JSU2WP	1.48 lbs.	1001921
	10JSUWOP	1.37 lbs.	1001923
	15JSU1WP	1.77 lbs.	1001930

Float Switches

PumpMaster® Pump Switch



Pump Down	Pump Up	Shipping Weight	
10PMD1WP		1.64 lbs.	1002630
10PMDWOP		1.56 lbs.	1002712
15PMD1WP		1.89 lbs.	1002715
15PMDWOP		1.82 lbs.	1002719
20PMD1WP		2.28 lbs.	1002727
20PMD2WP		2.32 lbs.	1002729
20PMDWOP		2.20 lbs.	1002731
	10PMU1WP	1.64 lbs.	1002707
	10PMUWOP	1.56 lbs.	1002706
	15PMU1WP	1.89 lbs.	1002721
	15PMUWOP	1.82 lbs.	1002725
	20PMU1WP	2.28 lbs.	1002733
	20PMUWOP	2.20 lbs.	1002737

Super Switch® Pump Switch



Pump Down	Pump Up	Shipping Weight	
10PMPDWOP		1.73 lbs.	1003235
15PMPD1WP		2.23 lbs.	1003243
15PMPD2WP		2.23 lbs.	1003245
15PMPDWOP		2.13 lbs.	1003247
20PMPD1WP		2.57 lbs.	1003255
20PMPD2WP		2.61 lbs.	1003257
20PMPDWOP		2.49 lbs.	1003259
	10PMPUWOP	1.73 lbs.	1003241
	15PMPU1WP	2.23 lbs.	1003249
	15PMPU2WP	2.23 lbs.	1003251
	15PMPUWOP	2.13 lbs.	1003253
	20PMPU1WP	2.57 lbs.	1003261
	20PMPU2WP	2.61 lbs.	1003263
	20PMPUWOP	2.49 lbs.	1003265

Float Switches & Holding Tank Alarms

SJE Rhombus Float Switches



Part Number	Description	SJE Model #
SJE15PDWOP	Pump Down Float Switch HD Without Plug-115/230v—15' cord	1002731
SJE15PUWOP	Pump Up Float Switch HD Without Plug-115/230v—15' cord	1002737
FLOAT WEIGHT	Float Weight-1lb. PVC	1002230

SJE Rhombus Holding Tank Alarms



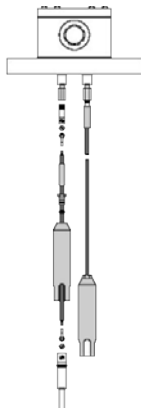
Part Number	Description	SJE Model #
LLALARM	(1008026) Low Level Outdoor Holding Tank Alarm With Light & Horn	4X-01LSGM
HLALARM	(1008024) High Level Outdoor Holding Tank Alarm With Light & Horn	4X-01HSGM

Liquid Level Controls

Warrick Controls



3 E



16 M



Part Number	Description
16MB1AO	Warrick -115V Direct General Purpose Control
16MB2AO	Warrick -230V Direct General Purpose Control
16ML1AO	Warrick -115V Inverse General Purpose Control
16ML2AO	Warrick -230V Inverse General Purpose Control
3W2	Warrick 3W2 Stainless Probe
3Z1A	Warrick Probe Wire - priced per ft.
3Z1B	Warrick Probe Adapter
3E3B	Warrick 3 Electrode Holder
3E4B	Warrick 4 Electrode Holder

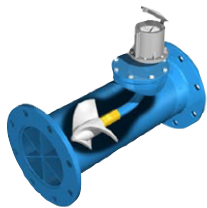
Water Meters

Sizes 5/8" - 3"



Carlton	5/8" X 3/4" Gallon Register Meter w/ss conn	6251SSM
Carlton	1" Gallon Register SS Meter w/conn	1000SSM
Carlton	1 1/2" Gallon Register SS Meter w/conn	150SSM
Carlton	2" Gallon Register SS Meter w/conn	200SSM
Carlton	Turbine Watermeter 2" flg 2-400gpm flow w/reg CI epoxy	C200T
Carlton	Turbine Watermeter 3" flg 3-550gpm flow w/reg CI epoxy	C300T
Carlton	Turbine Watermeter 4" flg 5-1250gpm flow w/reg CI epoxy	C400T
Performance Meter	5/8" X 3/4" Gallon Register Meter with Coupling	WM-58
Performance Meter	3/4" X 3/4" Gallon Register Meter with Coupling	WM-75
Performance Meter	1" Gallon Register Meter with Coupling	WM-100
Performance Meter	1 1/2" Gallon Register Meter with Coupling	WM-150
Performance Meter	2" Gallon Register Meter with Coupling	WM-200

McCrometer Sizes 2" - 24"



Models	Configuration	Sizes
MF100	Fixed Ell Meters with AWWA Class D Flanged Ends	2" - 24"
MT100	Fixed Ell Meters with NPS Threaded Ends	2" - 6"
ML100	Fixed Ell Irrigation Meters with Flanged Ends	6" - 12"
M0300	Bolt -On Saddle Meters	4" - 16"
McCrometer Meter	4" Saddle Meter 50—600 GPM Register Meter	M0304
McCrometer Meter	6" Saddle Meter 90—1200 GPM Register Meter	M0306
McCrometer Meter	8" Saddle Meter 100—1500 GPM Register Meter	M0308
McCrometer Meter	3" Threaded Meter 40- 250 GPM Register Meter	MT103
McCrometer Meter	4" Threaded Meter 50—600 GPM Register Meter	MT104
McCrometer Meter	6" Threaded Meter 90—1200 GPM Register Meter	MT106
McCrometer Meter	6" Flanged Meter 100—1500 GPM Register Meter	ML106

Pitless Adapters

Dickens, Campbell Pitless Adapters



1" S-10 Dickens Heavy Duty Pitless 5000 lb.	S-10 (PAS10)
1 1/4" S-12 Dickens Heavy Duty Pitless 5000 lb.	S-12 (PAS12)
1 1/2" S-15 Dickens Heavy Duty Pitless 5000 lb.	S-15 PA(PAS15)
2" S-20 Dickens Heavy Duty Pitless 5000 lb.	S-20 (PAS20)
1" Dickens Junior Pitless	JRS-10 (PAJRS10)
1" Dickens Standard Pitless	LDS10 (PALDS10)
VFD Constant Pressure 1" Dickens Standard Pitless	LDS-10 -PA
1 1/4" Dickens Standard Pitless	LDS12 (PALDS12)
1" Campbell	B10X
1 1/4" Campbell	B20X
2" Campbell Heavy Duty	S70X

Maass Weld-On Pitless Adapters



6" X 1 1/4"	6J11/4 (PA6J1.25)
6" X 1 1/2"	6J11/2 (PA6J1.5)
6" X 2"	6J2 (PA6J2)
6" X 2 1/2"	6J2.5 (PA6J2.5)
8" X 3"	8J3 (PA8J3)
10" X 4"	10J4 (PA10J4)

Baker Pitless Adapters



100BT

125BT

1" Compact Pitless 1500 lb.	1BT
1" Standard Pressurized 2500 lb.	100BT
1 1/4" Standard Pitless 2500 lb.	125BT
Baker Commercial Pitless	Call

Import Pitless Adapters

1" Import Pitless 900 lb.	PA100
1 1/4" Import Pitless 2,000 lb.	PA125

Well Caps

Baker Well Caps Water Tight



6WTA

6" Aluminum Cap	6WTA
6" Import Cast Iron Cap 1" Conduit	WC100-6
6" Import Cast Iron Cap 1 1/4" Conduit	WC125-6
6" Heavy Duty Baker Cap	BM6W
6" Cast Iron Turtle Cap	BM6WE1 (WCWT6WE1)
6" Cast Iron Turtle Cap 1 1/4" Conduit	BM6WE11.2
6" Heavy Duty Baker Cap w/Screened Vent	WCWT6WPSM
8" Heavy Duty Baker Cap	BM8W
8" Heavy Duty Baker Cap w/Screened Vent	WCWT8WPSM
8" Aluminum Cap	8WT
10" Baker Heavy Duty Cap	10W (WCWT10W)



BM6WE1



WC100-6



Baker Heavy Duty Cap
w/ Screened Vent

Maass Midwest Well Caps Watertight

WTCC-6-100



4" Aluminum Cap	WTCC-4 (WCWTCC4)
5" Aluminum Cap	WTCC-5 (WCWTCC5)
6" Aluminum Cap 1" Conduit	WTCC-6-100 (WCWTCC6)
6" Aluminum Cap 1 1/4" Conduit	WTCC-6-125
8" Aluminum Cap	WTCC-8 (WCWTCC8)

Personalized Caps Available

Tanks

Galvanized Tanks



Gallons	Dia.	Height	Weight	Part Number
42	16"	51"	71 lbs.	Q42V
82	20"	63"	114 lbs.	Q82V
120	24"	65"	154 lbs.	Q120VW
120	24"	65"	154 lbs.	Q120V
220	30"	78"	303 lbs.	Q220VW
315	36"	80"	416 lbs.	Q315VW
480	42"	87"	640 lbs.	Q480VSQW
252	36"	128"	685 lbs.	Q525C
900	42"	159"	1040 lbs.	Q900C

All Galvanized Tanks Are Rated 75 PSI.

Tank Saddles

Description	Part Number
"Quick" 220 to 900 Gallon Low Profile Saddles — per pair	Q376000
"Quick" 12 High Q525 Only Saddles — per pair	Q376012

Epoxy Steel No Air Cell Tanks



	Gallons	Weight	Part Number
20" X 36"	42	67 lbs.	AW42
16" X 53.5"	42	65 lbs.	AW42T
24" X 51"	85	94 lbs.	AW85
24" X 68"	120	120 lbs.	AW120



Tanks - Goulds

Goulds HydroPro Tanks



Models	Model No.	Gallons	Dia.	Height	Weight
Stand Models	V45	13.9	15 3/8"	24 15/16"	23
	V60	19.9	15 3/8"	32 3/8"	34
	V80	25.9	15 3/8"	39 9/16"	43
	V80EX	25.9	15 3/8"	42 5/8"	43
	V100	31.8	15 3/8"	47 1/4"	52
	V100S	31.8	22"	28"	56
	V140	45.2	22"	36 9/16"	64
	V200	65.1	22"	48 5/8"	89
	V250	83.5	26"	46"	116
	V260	84.9	22"	60 11/16"	113
	V350	115.9	26"	61 5/16"	161
Mounted Pump Models	V45MP	13.9	15 3/8"	25 11/16"	28
	V60MP	19.9	15 3/8"	33 1/8"	40
	V45PST	13.9	15 3/8"	25 11/16"	28
	V60PST	19.9	15 3/8"	33 1/8"	40
Buried Models	V60B	19.9	15 3/8"	28 1/2"	33
	V140B	45.2	22"	32 3/16"	63
In-Line Models	V6P	1.9	8 1/4"	10 3/16"	7
	V15P	4.9	11"	14 3/4"	11
	V25P	7.3	11"	21 1/16"	16
	V45P	13.9	15 3/8"	21 1/16"	24
Horizontal Models with Bracket	V25H	7.3	11"	21 1/16"	20
	V45H	13.9	15 3/8"	22 9/16"	26
	V60H	19.9	15 3/8"	33 7/8"	36

NOTES:

* Compatible with only certain Goulds Water Technology pumps.

P= Pipe Mounted

EX = With Base Extension

B = Buried

MP = Mounted Pump

PST = Pump System Tank

H = Horizontal With Bracket

Tanks - Wellmate

Vertical Tanks

Model	Part #	Gallon Cap.	Diameter	Height	Max Operating Pressure	Unit Ship Weight	Pallet Qty
WM4	CH30837	14.5	16"	26"	125 PSIG	17 lbs.	9
WM6	CH30840	19.8	16"	32"	125 PSIG	21 lbs.	9
WM 9	CH30854	29.5	16"	44"	125 PSIG	27 lbs.	9
WM12	CH30866	40.3	16"	57"	125 PSIG	37 lbs.	9
WM14WB	CH30951	47.1	21"	41 1/4"	125 PSIG	51 lbs.	4
WM20WB	CH31050	60.0	24"	41 1/2"	125 PSIG	61 lbs.	4
WM23	CH32855	79.6	21"	62"	125 PSIG	66 lbs.	4
WM25WB	CH31056	86.7	24"	55 1/4"	125 PSIG	84 lbs.	4
WM35W	CH31062	119.7	24"	74 1/4"	125 PSIG	108 lbs.	N/A

Low - Profile Tanks

Model	Part #	Gallon Cap.	Diameter	Height	Max Operating Pressure	Unit Ship Weight	Pallet Qty
WM6LP	CH31850	19.3	24"	20 1/4"	125 PSIG	28 lbs.	8
WM10LP	CH31957	34.5	24"	28"	125 PSIG	36 lbs.	8

Low - Profile Tanks with Pump Mount Bracket

Model	Part #	Gallon Cap.	Diameter	Height	Max Operating Pressure	Unit Ship Weight	Pallet Qty
WM6LP	CH31851	19.3	24"	20 1/4"	125 PSIG	31 lbs.	8
WM10LP	CH31958	34.5	24"	29"	125 PSIG	39 lbs.	8

Universal Tanks - Quick Connect

Model	Part #	Gallon Cap.	Diameter	Height	Max Operating Pressure	Unit Ship Weight	Pallet Qty
UT30	CH31385-1	30.0	16"	43 3/4"	75 PSIG	23 lbs.	9
UT40	CH31301-1	40.0	16"	56 1/2"	75 PSIG	31 lbs.	9
UT40SQ	CH31433-1	40.0	21"	35 1/4"	75 PSIG	33 lbs.	4
UT80	CH31309-1	80.0	21"	62"	75 PSIG	53 lbs.	N/A
UT120	CH31312-1	120.0	24"	72 1/2"	75 PSIG	77 lbs.	N/A

Tanks

Flexcon Pressure Tanks AVAILABLE ONLY IN UTAH & ARIZONA

Product Number	Description
PC6	2.1 Gallon Jet Rite Pressure Tank
PC15	4.5 Gallon Jet Rite Pressure Tank
WWT14	14 Gallon Jet Rite Pressure Tank
WWT20	20 Gallon Jet Rite Pressure Tank
WWT30	32 Gallon Jet Rite Pressure Tank
WWT35	33 Gallon Jet Rite Pressure Tank
WWT45	44 Gallon Jet Rite Pressure Tank
WWT65	62 Gallon Jet Rite Pressure Tank
WWT80	81 Gallon Jet Rite Pressure Tank
WWT85	85 Gallon Jet Rite Pressure Tank
WWT120	119 Gallon Jet Rite Pressure Tank

Dimensions

Drawdown

Model #	Tank Volume (Gallons)	Diameter	Height	NPT Connection	Weight	20/40	30/50	40/60
PC6	2.1	9"	11.3"	3/4"	7	0.8	0.7	0.6
PC15	4.5	10"	15.7"	3/4"	10	1.7	1.5	1.3
PC25	8.5	12.6"	19.7"	3/4"	13	3.1	2.6	2.3
PC44S	14	16"	18"	1"	29	5.1	4.3	3.8
WWT14	14	16"	22"	1"	28	5.6	4.8	4.1
WWT20	20	16"	29"	1"	36	8.1	6.8	5.9
WWT30	32	21"	27.75"	1 1/4"	54	12.9	10.9	9.4
WWT35	33	16"	42.75"	1"	49	13.3	11.3	9.7
WWT45	44	21"	36.25"	1 1/4"	57	17.7	15.0	13.0
WWT65	62	21"	48"	1 1/4"	82	25.0	21.1	18.3
WWT80	81	21"	62"	1 1/4"	99	32.6	27.6	23.9
WWT85	85	26"	44.5"	1 1/4"	121	34.3	29.0	25.1
WWT120	119	26"	59.75"	1 1/4"	153	48.00	40.6	35.1

Flow-Thru Pressure Tanks

Flexcon Flow-Thru Pressure Tanks AVAILABLE ONLY IN UTAH & ARIZONA

Product Number	Description
FT18	4.5 Gallon Flow-Thru Pressure Tank - No Stand
FT18S	4.5 Gallon Flow-Thru Pressure Tank - With Feet & Stand
FT66S	20 Gallon Flow-Thru Pressure Tank
FT144	44 Gallon Flow-Thru Pressure Tank
FT266	85 Gallon Flow-Thru Pressure Tank

Windvane Technology

The patented Flow-Thru connection features an innovative windvane insert that diverts system water into and, more importantly, out of the tank while the pump is running. The flushing action assures that the tank remains fresh and eliminates the possibility of stagnant water during normal system operation.



The Flow-Thru Solution

Flexcon's patented Flow-Thru technology assures total recirculation of the tank's water content within 50 gallon's of system demand.

The Flow-Thru tank continues to circulate water through the tank whenever the pump is operating.



Fiberglass Pressure Tanks

Flexcon Fiberglass Pressure Tanks AVAILABLE ONLY IN UTAH & ARIZONA



Product Number	Description
FL5	15 Gallon Fiberglass Pressure Tank
FL7	22 Gallon Fiberglass Pressure Tank
FL12	35 Gallon Fiberglass Pressure Tank
FL17	50 Gallon Fiberglass Pressure Tank
FL22	65 Gallon Fiberglass Pressure Tank
FL28	82 Gallon Fiberglass Pressure Tank
FL30	90 Gallon Fiberglass Pressure Tank
FL40	119 Gallon Fiberglass Pressure Tank

Dimensions

Drawdown

Model #	Tank Volume (Gallons)	Diameter	Height	NPT Connection	Weight	20/40	30/50	40/60
FL5	15	16.5"	25.2"	1"	15	6.0	5.1	4.4
FL7	22	16.5"	33.1"	1"	18	8.8	7.5	6.5
FL12	35	16.5"	47.9"	1"	26	14.1	11.9	10.3
FL17	50	21.4"	42.9"	1 1/4"	41	20.1	17.0	14.7
FL22	65	21.4"	50.9"	1 1/4"	51	26.1	22.0	19.1
FL28	82	21.4"	64.3"	1 1/4"	62	33.0	27.9	24.1
FL30	90	24.2"	56.6"	1 1/4"	72	36.2	30.6	26.5
FL40	119	24.2"	71.7"	1 1/4"	91	47.2	40.5	35.0

Pressure Tanks

In-Well Pressure Tanks



Model	Diameter	Gallon	
NT-50SS	4-1/2" x 60"	4	
NT-30SS	3-5/8" x 102"	3.5	
PL-45	4-1/2" x 80" PVC	4.25	

Well-X Trol Pressure Tanks



Model	Diameter	Gallon	
WX101	8" x 13"	20	
WX102	11" x 15"	4.4	
WX103	11" x 22"	7.5	
WX201	15" x 25"	14	
WX202	15" x 32"	20	
WX202-T (tan)	15" x 32"	20	
WX203	15" x 47"	32	
WX205	22" x 30"	34	
WX250	22" x 36"	44	
WX255	22" x 62.25"	81	
WX302	26" x 47.25"	86	
WX302-T (tan)	26" x 47.25"	86	
WX350	26" x 47.25"	119	
WX350-T (tan)	26" x 47.25"	119	



Pressure Tanks

Pro-Source Plus Pressure Tanks

Product Number	Description
PSP19T	19 Gallon Sta-Rite Pro-Source Plus Pressure Tank
PSP32T	32 Gallon Sta-Rite Pro-Source Plus Pressure Tank
PSP35T	35 Gallon Sta-Rite Pro-Source Plus Pressure Tank
PSP50T	50 Gallon Sta-Rite Pro-Source Plus Pressure Tank
PSP62T	62 Gallon Sta-Rite Pro-Source Plus Pressure Tank
PSP85T	85 Gallon Sta-Rite Pro-Source Plus Pressure Tank
PSP119T	119 Gallon Sta-Rite Pro-Source Plus Pressure Tank

Dimensions

Drawdown

Model #	Tank Volume (Gallons)	Diameter	Height	NPT Connection	Weight	20/40	30/50	40/60
PSP19T	19	16"	27.5"	1"	44 lbs.	6.9	5.8	5
PSP32T	32	16"	43"	1"	60 lbs.	11.6	9.8	8.5
PSP35T	35	20"	33"	1"	70 lbs.	12.7	10.9	9.3
PSP50T	50	24"	32.5"	1 1/4"	88 lbs.	18.3	15.5	13.4
PSP62T	62	24"	39.5"	1 1/4"	116 lbs.	21.4	18.3	16
PSP85T	85	24"	51"	1 1/4"	128 lbs.	30	26	22
PSP119T	119	24"	68"	1 1/4"	140 lbs.	41.3	35.4	31

Specifications

Shell - Heavy gauge steel
 Base - High-impact composite; ABS
 Finish - Electrostatically applied, baked-on polyester paint
 Water cell - One piece seamless PVC, made from FDA listed material
 Service connection - 304 SS - NPT threads integral to flange
 Air valve - Nickel - plated brass, threaded for ease of use

Features

Maximum Operating Pressure - 100 PSI on 16" & 20" Tanks, 125 PSI on 24" Tanks.

Elongated, seamless water cell

- Controlled 2-dimensional cell expansion
- Rugged, seamless "water cell" prevents the most common cause of pump failure "water logging"
- Water never touches the steel tank material
- Translucent bag material facilitates manufacturing quality control inspection

Polyester Paint Finish - Electrostatically powder painted, then oven baked for a smooth high gloss, appliance-quality finish. Resists corrosion.

Integral Stand Pipe - Promotes complete flushing of the water entering/exiting the tank

Nitrogen-Rich Precharge - Decreases air permeation three to four times over strait air change

40 PSI precharge - Ready for use with 40/60 pressure switch range systems. Enables installer to reduce pressure depending on pressure switch setting

Five Year Warranty - Managed & provided by Sta-Rite Industries

Torque Arrestors

Bean Hard Rubber Spiders



6" X 1"	TA6100
6" X 1 1/4"	TA6125
6" X 1 1/2"	TA6150
6" X 2"	TA6200
8" X 1 1/4"	TA8125
8" X 1 1/2"	TA8150
8" X 2"	TA8200
8" X 3"	TA8300
8" X 4"	TA8400

Adjustable w/S.S. Clamps



1"- 1 1/4" Drop Pipe-4"-8" Casing	STA48M (TA48)
-----------------------------------	---------------

Plastic Cable/Wire Guard



Cable Guard	CG46
Cable Guard	WG6
1" Cable Guard	WG100
1"- 1 1/4" Cable Guard	WG125

Poly Rope



1/4"-1,000 lb. 500'	SSR500
3/8" X 630'	SSR630
1/4"-1,000 lb. 1,000'	SSR1000
3/8" X 1200'	SSR1200



Tank Tees

Bronze Fabricated



Solid Bronze



Fabricated



Short Solid

1 1/4" w/Two taps	711
Elevated Short 1" X 1 1/4" w/Union	771
1" X 1 1/4" X 14" w/Union	7247
1" MPT Tank Conn. (1" MPT X 3/4" FPT in Line) X 13" w/2 " FPT Drain/Relief Long Fab	07FB-14X1-2
1 1/4" MPT Tank Conn. (1 1/4" MPT X 1" FPT in Line) X 13" w/2 3/4" FPT Drain/Relief Long Fab	07FB-13-2
1 1/4" MPT Tank Conn. (1 1/4" MPT X 1" FPT in Line) X 16" w/2 3/4" FPT Drain/Relief Long Fab	07FB-16-2
1 1/4" MPT Tank Conn. (1 1/4" MPT X 1" FPT in Line) X 13" w/2 3/4" FPT Drain/Relief Solid Bronze	07TK-13-2
1 1/4" MPT Tank Conn (1 1/4" MPT X 1" FPT in line) X 12 3/4" w/2 3/4" FPT Drain/Relief Bronze w/Union	07TK-13-2U
1 1/4" MPT Tank Conn. (1 1/4" MPT X 1" FPT in Line) X 4 1/2" w/2 3/4" FPT Drain/Relief Short Bronze	07TK-13S-2
1 1/4" MPT Tank Conn.(1 1/4" MPT X 1" FPT in Line) X 4 1/2" w/2 3/4" FPT Drain/Relief Short Bronze w/Union	07TK-13S-2U
1 1/4" Tank Conn. (1 1/4" MPT X 1" FPT in line) X 4 1/2" w/2 3/4" FPT Drain/Relief Short Bronze w/Union	07TK-13SF-2U
1" MPT Tank Conn.(1" MPT X 3/4" FPT X 4 1/2" w/2 1/2" FPT Drain/Relief Short Bronze	07TK-25S-2
1" MPT Tank Conn.(1" MPT X 3/4" FPT X 3 3/8" w/2 1/2" FPT Drain/Relief Short Bronze	07UTT5-4R-2
1 1/4" MPT Tank Conn. Short	T125B
1 1/4" MPT Tank Conn. X 13" Bronze	T125B-13
1 1/4" MPT Tank Conn. X 16" Bronze	T125B-16
1 1/4" MPT Tank Conn. X 16" w/Union Bronze	T125B-16U
1 1/4" MPT Tank Conn. X 16" Breakaway Bronze	T125BA-16
1 1/4" MPT Tank Conn. Female Breakaway	T125BA-F

Galvanized Tank Cross



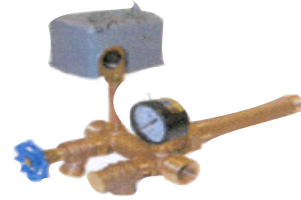
1" X 1" X 1" F	HC100G (T100G)
1 1/4" X 1 1/4" X 1 1/4" F	HC125G (T125G)

Tank Tee Packages & Manifolds, Yard Hydrants

Tank Package



TAK-MAN



TANK PACKAGE

MLS Tank Package TC54X13 30/50	TAK-1
MLS Tank Package for WELLMATE 30/50	TAK-3WELLMATE
Constant Pressure Tank Tee Manifold Bronze	TAK-MAN
Constant Pressure Tank Tee Manifold Stainless Steel	O7M-125SS
Constant Pressure Tank Tee Manifold Package Stainless	TFP-O7M125SS-MB

Simmons



1' Bury Depth	4801
2' Bury Depth	4802
3' Bury Depth	4803
4' Bury Depth	4804
5' Bury Depth	4805
6' Bury Depth	4806
Repair Kit	850

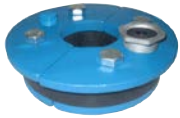
Baker



1' Bury Depth	1WHLF
2' Bury Depth	2WHLF
3' Bury Depth	3WHLF
4' Bury Depth	4WHLF
5' Bury Depth	5WHLF
6' Bury Depth	6WHLF
Repair Kit	H220DA
O-Ring	SE2115N71

Well Seals

Simmons Split Top Cast Iron



4" X 1"	SI111
4" X 1 1/4"	SI112
4" X 2"	SI114
5" X 1"	SI121
5" X 1 1/4"	SI122
6" X 1"	SI136
6" X 1 1/4"	SI137
6" X 1 1/2"	SI138
6" X 2"	SI139

Simmons Jet Pump Seals



6" X 1 1/4" X 1"	SI177
6" X 1 1/4" X 1 1/4"	SI178
6" X 1 1/2" X 1 1/4"	SI179

ABS Well Seals



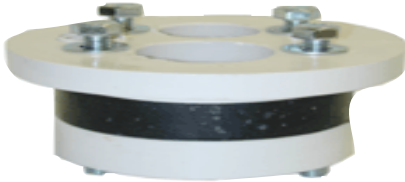
4" X 1"	ABS4X1
4" X 1 1/4"	ABS4X1 1/4
5" X 1 1/4"	ABS5X1 1/4
6" X 1"	ABS6X1
6" X 1 1/4"	ABS6X1 1/4

Well Seals

Simmons Solid Top Well Seals

Casing Size	Drop Pipe	Part #
4"	1"	WSS4X1
4"	1 1/4"	WSS4X11/4
4"	1 1/2"	WSS4X11/2
5"	1"	WSS5X1
5"	1 1/4"	WSS5X11/4
5"	1 1/2"	WSS5X11/2
5"	2"	WSS5X2
6"	1"	WSS6X1
6"	1 1/4"	WSS6X11/4
6"	1 1/2"	WSS6X11/2
6"	2"	WSS6X2
6"	2 1/2"	WSS6X2-1/2
6"	3"	WSS6X3
7"	1"	WSS7X1
7"	1 1/4"	WSS7X11/4
7"	1 1/2"	WSS7X11/2
7"	2"	WSS7X2
8"	1"	WSS8X1
8"	1 1/4"	WSS8X11/4
8"	1 1/2"	WSS8X11/2
8"	2"	WSS8X2
8"	2 1/2"	WSS8X21/2

Casing Size	Drop Pipe	Part #
8"	3"	WSS8X3
8"	4"	WSS8X4
10"	1"	WSS10X1
10"	1 1/4"	WSS10X11/4
10"	1 1/2"	WSS10X11/2
10"	2"	WSS10X2
10"	2 1/2"	WSS10X21/2
10"	3"	WSS10X3
10"	4"	WSS10X4
10"	5"	WSS10X5
10"	6"	WSS10X6
12"	1"	WSS12X1
12"	1 1/4"	WSS12X11/4
12"	1 1/2"	WSS12X11/2
12"	2"	WSS12X2
12"	2 1/2"	WSS12X21/2
12"	3"	WSS12X3
12"	4"	WSS12X4
12"	5"	WSS12X5
12"	6"	WSS12X6



Pipe Elevators

Pipe Elevators



PL100

1"	Baker	910WX
1 1/4"	Baker	912WX
1 1/2"	Baker	915WX
2"	Baker	920WX
1" - 2" Metal Pipe Holder w/Wooden Base		201PH
3/4"-2" Kwik Klamp		KWIKLAMP
Jaw Set with Bolts		KWIKJAW



Kwik Klamp



912WX



201PH

Powers Well Sounder



500 FT w/1 Meter Markings	WS-500-1
Replacement Electrodes	E-2W
500 ft. Replacement Spool	500-1
500' Units are normal stock at MLS branches. Powers will build to order, units 100' to 2000'. Call local branch for price and availability.	

A.O. Smith Motors

56C-Round Flange-Keyed Shaft-Single Phase-ODP-3450 RPM



HP	SF	A.O. Smith No.
1/2	1.6	SK1052
3/4	1.5	SK1072
1	1.5	SK1102
1 1/2	1.3	SK1152
2	1.3	SK1202
3	1.15	SK1302V1

56J-Round Flange-Thrd. Shaft-Single Phase-ODP-3450 RPM



HP	A.O. Smith No.
1/2	ST1052
3/4	ST1072
1	ST1102
1 1/2	ST1152
2	ST1202
3	ST1302V1

48Y-Square Flange-Thrd. Shaft-Single Phase-ODP 3450 RPM



HP	SF	A.O. Smith No.
1/2	1.6	USQ1052
3/4	1.5	USQ1072
1	1.5	USQ1102
1 1/2	1.3	USQ1152
2	1.3	USQ1202
3	1.15	USQ1252



Pentek Motors

Pentek Motors 4"



HP	Volt.	Phase	Weight	Part
2 WIRE MOTORS				
1/2 2W	115	1	19	P42B0005A1-C
1/2 2W	230	1	19	P42B0005A2-C
3/4 2W	230	1	23	P42B0007A2-C
1 2W	230	1	25	P42B0010A2-C
1 1/2 2W	230	1	29	P42B0015A2-C
3 WIRE MOTORS				
1/2 3W	115	1	19	P43B0005A1-C
1/2 3W	230	1	19	P43B0005A2-C
3/4 3W	230	1	21	P43B0007A2-C
1 3W	230	1	23	P43B0010A2-C
1 3W	230	3	23	P43B0010A3-C
1 1/2 3W	230	1	27	P43B0015A2-C
1 1/2 3W	230	3	24	P43B0015A3-C
2 3W	230	1	31	P43B0020A2-C
2 3W	230	3	28	P43B0020A3-C
3 3W	230	1	40	P43B0030A2-C
3 3W	230	3	32	P43B0030A3-C
5 3W	230	1	70	P43B0050A2-C
5 3W	230	3	55	P43B0050A3-C
7 1/2 3W	230	3	70	P43B0075A3-C

Pentek Motors

Pentek XE-6 Motors 6"



HP	Volt.	Phase	Weight	Part
3 WIRE MOTORS				
5HP	230	3	87	P60A0050A3
7.5HP	230	3	97	P60A0075A3
10HP	230	3	134	P60A0100A3
15HP	230	3	151	P60A0150A3
20HP	230	3	166	P60A0200A3
25HP	230	3	180	P60A0250A3
30HP	230	3	207	P60A0300A3
5HP	230	3	115	P60A0050A3
7.5HP	230	3	127	P60A0075A3
10HP	230	3	134	P60A0100A3
15HP	230	3	151	P60A0150A3
20HP	230	3	166	P60A0200A3
25HP	230	3	180	P60A0250A3
30HP	230	3	207	P60A0300A3
5HP	460	3	115	P60A0050A4
7.5HP	460	3	127	P60A0075A4
10HP	460	3	134	P60A0100A4
15HP	460	3	151	P60A0150A4
20HP	460	3	166	P60A0200A4
25HP	460	3	180	P60A0250A4
30HP	460	3	207	P60A0300A4
40HP	460	3	229	P60A0400A4
50HP	460	3	319	P60A0500A4



Hitachi Motors

Hitachi Motors 6"



HP	Volt.	Phase	Weight	Part
6" 3600 RPM 1 Phase				
5	230	1	121	6HIT2-5-1
7 1/2	230	1	134	6HIT2-7-1
10	230	1	139	6HIT2-10-1
15	230	1	154	6HIT2-15-1
6" 3 PHASE				
5	230	3	95	6HIT2-5-2
5	460	3	95	6HIT2-5-4
7 1/2	230	3	99	6HIT2-7-2
7 1/2	460	3	99	6HIT2-7-4
10	230	3	110	6HIT2-10-2
10	460	3	110	6HIT2-10-4
15	230	3	121	6HIT2-15-2
15	460	3	121	6HIT2-15-4
20	230	3	128	6HIT2-20-2
20	460	3	128	6HIT2-20-4
25	230	3	150	6HIT2-25-2
25	460	3	150	6HIT2-25-4
30	230	3	161	6HIT2-30-2
30	460	3	161	6HIT2-30-4
40	460	3	176	6HIT2-40-4
50	460	3	200	6HIT2-50-4
60	460	3	231	6HIT2-60-4
50	460	3	231	***86HIT2-50-4
60	460	3	238	***86HIT2-60-4
		Voltage	Plug	For Converting
230 V				S33591
460V				S33592

*** Models: 8" Diameter x 6" Motor Bracket

Hitachi Motors 8" - 14"



Three Phase 8", 460 Volt 2 Pole 3600 RPM

HP	Volt.	Phase	Weight	Part
40	460	3	331	8HIT2-40-4
50	460	3	353	8HIT2-50-4
60	460	3	375	8HIT2-60-4
75	460	3	397	8HIT2-75-4
100	460	3	441	8HIT2-100-4
125	460	3	450	8HIT2-125-4
150	460	3	518	8HIT2-150-4
200	460	3	816	10HIT2-200-4
250	460	3	948	10HIT2-250-4
300	460	3	1455	12HIT2-300-4

Three Phase 8"-14" , 460 Volt 4 Pole 1800 RPM

7 1/2	460	3	360	8HIT4-7-4
10	460	3	360	8HIT4-10-4
15	460	3	380	8HIT4-15-4
20	460	3	380	8HIT4-20-4
25	460	3	410	8HIT4-25-4
30	460	3	410	8HIT4-30-4
40	460	3	590	10HIT4-40-4
50	460	3	590	10HIT4-50-4
60	460	3	720	10HIT4-60-4
75	460	3	720	10HIT4-75-4
100	460	3	900	10HIT4-100-4
125	460	3	900	10HIT4-125-4
150	460	3	1050	12HIT4-150-4
200	460	3	1370	12HIT4-200-4
250	460	3	1830	14HIT4-250-4
300	460	3	2100	14HIT4-300-4

CentriPro Motors

CentriPro Motors 4"



HP	Volt.	Phase	Weight	Part
2 Wire Motors				
1/2 2W	115	1	20	M05421
1/2 2W	230	1	20	M05422
3/4 2W	230	1	24	M07422
1 2W	230	1	25	M10422
1 1/2 2W	230	1	30	M15422
3 Wire Motors				
1/2 3W	115	1	20	M05411
1/2 3W	230	1	19	M05412
3/4 3W	230	1	22	M07412
1 3W	230	1	24	M10412
1 3W	230	3	24	M10432
1 1/2 3W	230	1	29	M15412
1 1/2 3W	230	3	24	M15432
2 3W	230	1	34	M20412
2 3W	230	3	30	M20432
3 3W	230	1	42	M30412
3 3W	230	3	34	M30432
5 3W	230	1	70	M50412
5 3W	230	3	58	M50432
7 1/2 3W	230	3	70	M75432

CentriPro Motors

CentriPro Motors 6" - 10"



HP	Volt.	Phase	Weight	Part
6" 3600 RPM 1 Phase				
5	230	1	143	6M051
7 1/2	230	1	161	6M071
10	230	1	161	6M101
15	230	1	181	6M151
6" 3 PHASE				
5	230	3	117	6M052
5	460	3	117	6M054
7 1/2	230	3	121	6M072
7 1/2	460	3	121	6M074
10	230	3	143	6M102
10	460	3	143	6M104
15	230	3	161	6M152
15	460	3	161	6M154
20	230	3	170	6M202
20	460	3	170	6M204
25	230	3	194	6M252
25	460	3	194	6M254
30	230	3	209	6M302
30	460	3	209	6M304
40	460	3	220	6M404
50	460	3	452	86M504
60	460	3	474	86M604
75	460	3	507	8M754
100	460	3	573	8M1004
125	460	3	584	8M1254
150	460	3	672	8M1504
200	460	3	970	10M2004



Franklin Motors

Franklin Motors 4"



HP	Volt.	Phase	Weight	Part
1/2 2W	115	1	18	F4M2445049004S
1/2 2W	230	1	18	F4M2445059004S
3/4 2W	230	1	21	F4M2445079004S
1 2W	230	1	24	F4M2445089003S
1 1/2 2W	230	1	31	F4M2443099004S
1/2 3W	115	1	19	F4M2145049004S
1/2 3W	230	1	19	F4M2145059004S
3/4 3W	230	1	21	F4M2145079004S
1 3W	230	1	24	F4M2145089003S
1 3W	230	3	24	F4M2345139203S
1 1/2 3W	230	1	28	F4M2243009203S
1 1/2 3W	200	3	28	F4M2345049203S
1 1/2 3W	230	3	28	F4M2345149203S
1 1/2 3W	460/380	3	33	F4M2345249403S
2 3W	230	1	33	F4M2243019204S
2 3W	200	3	33	F4M2343059204S
2 3W	230	3	33	F4M2343159204S
2 3W	460/380	3	33	F4M2343259404S
3 3W	230	1	41	F4M2243022604
3 3W	200	3	41	F4M2343062604
3 3W	230	3	41	F4M2343162604
3 3W	460/380	3	41	F4M2343262604
5 3W	230	1	70	F4M2243038602
5 3W	200	3	55	F4M2343078602
5 3W	230	3	55	F4M2343178602
5 3W	460/380	3	55	F4M2343278602
7 1/2 3W	200	3	70	F4M2343088602
7 1/2 3W	230	3	70	F4M2343188602
7 1/2 3W	460/380	3	70	F4M2343288602
10 3W	460/380	3	75	F4M2345958602

Franklin Motors

Franklin Motors 6" Sandfighter w/Subtrol



HP	Volt.	Phase	Weight	Part No.
5	230	1	110	F6M2261108020
5	200	3	101	F6M2366508120
5	230	3	101	F6M2366008120
5	460/380	3	101	F6M2366108120
7 1/2	230	1	123	F6M226118020
7 1/2	200	3	108	F6M2366518120
7 1/2	230	3	108	F6M2366018120
7 1/2	460/380	3	108	F6M2366118120
10	230	1	141	F6M2261128020
10	200	3	141	F6M2366528120
10	230	3	116	F6M2366028120
10	460/380	3	116	F6M2366128120
15	230	1	154	F6M2261138020
15	200	3	129	F6M2366538120
15	230	3	129	F6M2366038120
15	460/380	3	129	F6M2366138120
20	200	3	145	F6M2366548120
20	230	3	145	F6M2366048120
20	460/380	3	145	F6M2366148120
25	200	3	156	F6M2366558120
25	230	3	156	F6M2366058120
25	460/380	3	156	F6M2366158120
30	200	3	174	F6M2366568120
30	230	3	174	F6M2366068120
30	460/380	3	174	F6M2366168120
40	460/380	3	202	F6M2366178125
50/60	460/380	3	330	F6M2760096262

Franklin Motors

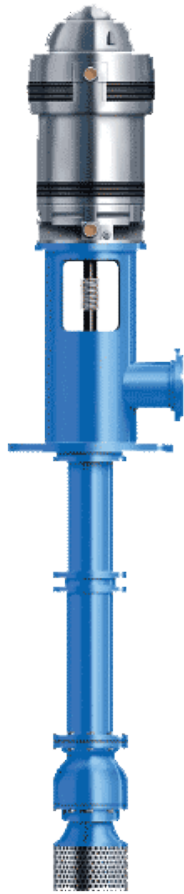
Franklin Motors 8" Standard



HP	Volt.	Phase	Weight	Part Number
40	460/380	3	320	F8M2396008521
50	460/380	3	345	F8M2396018521
60	460/380	3	375	F8M2396028521
75	460/380	3	430	F8M2396038541
100	460/380	3	530	F8M2396048541
125	460/380	3	700	F8M2391058504
150	460/380	3	840	F8M2391068504
175	460/380	3	925	F8M2391078504
200	460/380	3	1040	F8M2391088504

G.E. Ultra® Irrigation & Line Shaft Turbine Motors

G.E. ULTRA Vertical Hollow Shaft Motors



Part Number	Horsepower
V4401NRR	5HP
V4402NRR	7.5HP
V4403NRR	10HP
V4404NRR	15HP
V4405NRR	20HP
V4406NRR	25HP
V4407NRR	30HP
V4408NRR	40HP
V4409NRR	50HP
V4410NRR	60HP
V4411NRR	75HP
V4413NRR	100HP
V4414NRR	125HP
V4415NRR	150HP
V4416NRR	200HP
V4418NRR	250HP
V4420NRR	300HP

Note: Coupling Sold Separately

We Stock and Assemble:
Goulds and Fairbanks Morse Line Shaft Turbines, Berkeley and Goulds Large Centrifugals and Submersible Turbines.

We stock: G.E. VHS Motors, U.S. VHS Motors and Sub Motors through 100HP.

US NIDEC Inverter Duty Motors

US NIDEC Inverter Duty Motors



Part Number	Horsepower
H015V2BLE	15
H020V2BLF	20
H025V2BLF	25
H030V2BLF	30
H040V2BLG	40
H050V2BLG	50
H060V2SLG	60
H075V2SLG	75
H0100V2SLG	100
H0100V2SLGX	100
H0125V2SLG	125
H0125V2SLGX	125
H0150V2SLG	150
H0150V2SLGX	150
H0200V2SLH	200
H0200V2SLHX	200
H0250V2SLH	250
H0250V2SLHX	250
H0300V2SLH	300
H0300V2SLHX	300
H0350V2SLH	350
H0350SLHX	350
H0400V2SLH	400
H0400V2SLHX	400
H0450V2SLH	450
H0450V2SLHX	450
H0500V2SLH	500
H0500V2SLHX	500
H0600V2SLJX	600

Control Boxes

Pentek Capacitor Start / Induction Run					
Part	HP	Volt.	Phase	Weight	Product Number
Cap Start Induction Run	1/2	115	1	4 lbs.	SMC-IR0511
Cap Start Induction Run	1/2	230	1	4 lbs.	SMC-IR0521
Cap Start Induction Run	3/4	230	1	4 lbs.	SMC-IR0721
Cap Start Induction Run	1	230	1	4 lbs.	SMC-IR1021

Pentek Capacitor Start / Induction Run					
Part	HP	Volt.	Phase	Weight	Part Number
Cap Start Cap. Run	1/2	230	1	5 lbs.	SMC-CR0521
Cap Start Cap. Run	3/4	230	1	5 lbs.	SMC-CR0721
Cap Start Cap. Run	1	230	1	5 lbs.	SMC-CR1021
Cap Start Cap. Run	1 1/2	230	1	7 lbs.	SMC-CR1521
Cap Start Cap. Run	2	230	1	7 lbs.	SMC-CR2021
Cap Start Cap. Run	3	230	1	7 lbs.	SMC-CR3021
Cap Start Cap. Run	5	230	1	8 lbs.	SMC-CR5021

Pentek With MAG. Contractor Capacitor Start / Capacitor Run					
Part	HP	Volt.	Phase	Weight	Part Number
Deluxe cap Start Cap. Run	2	230	1	7 lbs.	SMC-CRP2021
Deluxe cap Start Cap. Run	3	230	1	8 lbs.	SMC-CRP3021
Deluxe cap Start Cap. Run	5	230	1	12 lbs.	SMC-CRP5021

Sta-Rite VIP Box					
Part	HP	Voltage	Phase	Weight	Part Number
Cap Start Cap. Run	1/2	230	1	7 lbs.	VIP4C02
Cap Start Cap. Run	3/4	230	1	7 lbs.	VIP4D02
Cap Start Cap. Run	1	230	1	7 lbs.	VIP4E02
Cap Start Cap. Run	1 1/2	230	1	8 lbs.	VIP4F02
Cap Start Cap. Run	2	230	1	10 lbs.	VIP4G02



Control Boxes

CentriPro



CentriPro Quick Disconnect Boxes				CentriPro CSCR Boxes		
HP	Voltage	Part		HP	Voltage	Part
1/2	115	CB05411		1/2	115	NA
1/2	230	CB05412		1/2	230	CB05412CR
3/4	230	CB07412		3/4	230	CB07412CR
1	230	CB10412		1	230	CB10412CR
CentriPro Single Phase Mag. Contractor Boxes				1 1/2	230	CB15412CR
1 1/2	230	CB15412MC		2	230	CB20412CR
2	230	CB20412MC		3	230	CB30412CR
3	230	CB30412MC		5	230	CB50412CR
5	230	CB50412MC				

Franklin

Part	HP	Voltage	Phase	Weight	Part Number
Cap Start Induction Run	1/2	115	1	4	FCB28010449
Cap Start Induction Run	1/2	230	1	4	FCB28010549
Cap Start Induction Run	3/4	230	1	4	FCB28010749
Cap Start Induction Run	1	230	1	4	FCB28010849
Cap Start Cap. Run	1/2	230	1	5	FCB28240550
Cap Start Cap. Run	3/4	230	1	5	FCB28240750
Cap Start Cap. Run	1	230	1	5	FCB28240850
Cap Start Cap. Run	1 1/2	230	1	7	FCB28230081
Cap Start Cap. Run	2	230	1	7	FCB28230181
Cap Start Cap. Run	3	230	1	7	FCB28230281
Cap Start Cap. Run	5	230	1	8	FCB28211381
Cap Start Cap. Run	7 1/2	230	1	12	FCB28220192
Cap Start Cap. Run	10	230	1	14	FCB28220292
Deluxe cap Start Cap. Run	2	230	1	7	FCB28230183
Deluxe cap Start Cap. Run	3	230	1	8	FCB28230283
Deluxe cap Start Cap. Run	5	230	1	12	FCB28211393
Deluxe cap Start Cap. Run	7 1/2	230	1	14	FCB28220193
Deluxe cap Start Cap. Run	10	230	1	15	FCB28220293
Deluxe cap Start Cap. Run	15	230	1	17	FCB28220393

Cycle Stop Valves

CSV1-Max Shutoff Head 150 PSI

Thermoplastic/Stainless Steel Compression Spring/Buna N Diaphragm-1-30 GPM



1.25" 40 PSI 3-50gpm	CSV12540-3
1.25" 50 PSI 1-30gpm	CSV12550-1
1.25" 50 PSI 3-50gpm	CSV12550-3
1.25" 60 PSI 1-30gpm	CSV12560-1
1.25" 60 PSI 3-50gpm	CSV12560-3

CSV1Z-Max Shutoff Head 400 PSI



Bronze body/Composite Bell Housing/Nylon Reinforced Buna N Diaphragm/Replaceable Acetyl Cartridge-1-30 GPM

1" Adjustable 15-150 PSI Stainless Steel	CSV1A
--	-------

CSV2W-Max Shutoff Head 300 PSI



Bronze Body Construction/Renewable Stainless Steel Seat/Reinforced Buna Diaphragm

	GPM	
1 1/4" 25-75 PSI	50	CSV2W1.25-25-75
1 1/4" 50-120 PSI	50	CSV2W1.25-50-120

Additional Models



	GPM	
1"-1 1/4"	35 & 60	CSV2HP
2"-6"	200-1600	CSV3R
1 1/2"-6"	125-1600	CS3VC

Flowmatic Valves

C153SS-L



	GPM	
1" Male by 1 1/4 Female NPT	1 - 20	C153001S6-50 1" 1gpm - 25gpm 50psi rating all S.S. Construction
1 1/4" Female NPT	2 - 50	C153001S6-60 1" 1gpm - 25gpm 60psi rating all S.S. Construction

Electrical Controls / VFD / Soft Starts

VFDs from Manufacturer

Ready for purchase Out of the Box NEMA 1, NEMA 12 & NEMA 4X Rated Chassis Protection Options pre-programmed for your specific application

Variable Frequency Drives (VFDs) are known to significantly improve system efficiency in applications such as water supply, treatment, distribution, pressure and level control, irrigation, and wastewater applications such as pumps and blowers where speed, pressure and/or level control are critical. VFD's offer the greatest opportunity for energy savings when driving variable torque loads. Variable torque loads are commonly found in variable flow applications as with pumps.



POWERED BY
Danfoss

Soft Starts

Protect the lifespan while maximizing the performance of your motor and pump with a great, value-priced Soft Start from MLS. 75hp up to 600hp available, 230V to 480V.

These Nema 4 and Nema 12 Soft Start panels are easily configured to meet the requirements of a variety of demanding applications from agricultural and municipal pumps to manufacturing conveyors and mixers, and many more.

The easy to read, four line, plain English graphical display and three menu (Quick, Application Setup, and Main) format inside provides configuration and programming ease and effective systems feedback.



POWERED BY
Danfoss

Mitchell Custom Solutions: W-Series / D-Series Panels

Custom Solutions

Heat Sink cooling is Mitchell Lewis & Staver's new standard panel cooling option up to 125HP in 2017. Mitchell Lewis & Staver continues to lead the way in defining the best engineered solutions for hydraulic and electrical applications. The **W-Series Heat Sink Panel** has been created to offer end users a significant reduction in size and weight; and is more favorable in cost of ownership in comparison to that of fan cooling.

The manufacturing of the Heat Sink panel involves installing the drive with the Heat Sink extending through the back of the enclosure. For VFDs below 150HP, the Heat Sink can transfer heat much more effectively to the atmosphere than other cooling methods. The mounting kit requires the use of a NEMA 1 rated VFD that has a 40° higher maximum ambient operating temperature, making the full solution more resilient and reliable than other available drive options on the market. Panels 150HP and above will continue to be offered with a standard fan cooled option. The W-Series panels are now standard offerings, however Mitchell's is committed to serving your VFD needs, including custom engineering the perfect solution for your project.



D-Series Panels:

Even though Mitchell Controls D-Series panels have a significant installed footprint, and the advantages of transitioning to the Heat Sink cooled W-Series are significant; we will continue to offer the D-Series product as configurable built panels based on your specifications. This panel design is available up to 125HP.

The W-Series and D-Series panels differ in their ability to accommodate Add-Ons. They also differ significantly in their methods of cooling the panel interior. The HP requirement, operating environment and/or your specific application are key factors in determining the best panel format for your job.

Variable Frequency Drives (VFD)

Pentek Intellidrive™ Pump Controllers



Description	Model	Weight
1 HP, 1 or 3 PH, 2 or 3W, NEMA 3R	PID10	22
1 1/2 to 2 HP, 1 or 3 PH, 2 or 3W, NEMA 3R	PID20	22
3HP, 3PH, 3W, NEMA 3R	PID30	22
5 HP, 3 PH, 3W, NEMA 3R	PID50	22

Constant Pressure Aquavar™ Solo Submersible Pump Controllers



Description	Model	Weight
.50-1.50 HP Controller Assembly	1AS15	22
.75-2 HP Controller Assembly	3AS20	22
3 HP Controller Assembly	3AS30	23
5 HP Controller Assembly	3AS50	25
4.2 AMPS Aqua Boost Controller	1AB2	17
6.9 AMPS Aqua Boost Controller	2AB2	18

Berkeley 60 Hz NEMA 3 Kits	
Description	Part Number
7 GPM, 1.5 HP (Consists of L7P4FMGS, PID20 & P43B0015A3-C)	B7PIK15-60
10 GPM, 1.5 HP (Consists of L10P4FMGS, PID20 & P43B0015A3-C)	B10PIK15-60
10 GPM, 2 HP (Consists of L10P4GMGS, PID20 & P43B0020A3-C)	B10PIK20-60
15 GPM, 1 HP (Consists of L15P4EMGS, PID10 & P43B0010A3-C)	B15PIK10-60
15 GPM, 1.5 HP (Consisting of L15P4FMGS, PID20 & P43B0015A3-C)	B15PIK15-60
20 GPM, 1.5 HP (Consisting of L20P4FMGS, PID20 & P43B0015A3-C)	B20PIK15-60
20 GPM, 2 HP (Consisting of L20P4GMGS, PID20 & P43B0020A3-C)	B20PIK20-60
90 GPM, 2 HP (Consisting of L90BF20, PID20 & P43B0020A3-C)	B90PIK20-60
90 GPM, 3 HP (Consisting of L90BF30, PID30 & P43B0030A3-C)	B90PIK30-60



Berkeley 80 Hz NEMA 3 Kits

Description	Part Number
7 GPM, 1.5HP (Consisting of L7P4DMGS, PID20 & P43B0015A3-C)	B7PIK15-80
10 GPM, 1.5 HP (Consisting of L10P4DMGS, PID20 & P43B0015A3-C)	B10PIK15-80
10 GPM, 2 HP (Consisting of L10P4EMGS, PID20 & P43B0020A3-C)	B10PIK20-80
10 GPM, 3 HP (Consisting of L10P4FMGS, PID30 & P43B0030A3-C)	B10PIK30-80
15 GPM, 3 HP (Consisting of L15P4FMGS, PID30 & P43B0030A3-C)	B15PIK30-80
20 GPM, 2 HP (Consisting of L20P4EMGS, PID20 & P43B0020A3-C)	B20PIK20-80
20 GPM, 3 HP (Consisting of L20P4FMGS, PID30 & P43B0030A3-C)	B20PIK30-80
30 GPM, 2 HP (Consisting of L30P4EMGS, PID20 & P43B0020A3-C)	B30PIK20-80
30 GPM, 3 HP (Consisting of L30P4FMGS, PID30 & P43B0030A3-C)	B30PIK30-80
50 GPM, 3 HP (Consisting of L50P4FMGS, PID30 & P43B0030A3-C)	B50PIK30-80
90 GPM, 3 HP (Consisting of L90BF20, PID30 & P43B0030A3-C)	B90PIK30-80

Sta-Rite 60 Hz NEMA 3 Kits

Description	Part Number
5 GPM, 1.5 HP (Consisting of L5P4FHL, PID20 & P43B0015A3-C)	S5PIK15-60
7 GPM, 2 HP (Consisting of L7P4GHL, PID20 & P43B0020A3-C)	S7PIK20-60
10 GPM, 1.5 HP (Consisting of L10P4FH, PID20 & P43B0015A3-C)	S10PIK15-60
15 GPM, 1 HP (Consisting of L15P4EH, PID10 & P43B0010A3-C)	S15PIK10-60
20 GPM, 2 HP (Consisting of L20P4GH, PID20 & P43B0020A3-C)	S20PIK20-60
20 GPM, 3 HP (Consisting of L20P4HH, PID30 & P43B0030A3-C)	S20PIK30-60
30 GPM, 3 HP (Consisting of L30P4HH, PID30 & P43B0030A3-C)	S30PIK30-60



Pentek Intellikit

(Includes Pump, Motor & Drive)

Sta-Rite 80 Hz NEMA 3 Kits	
Description	Part Number
10 GPM, 2 HP (Consisting of L10P4EH, PID20 & P43B0020A3-C)	S10PIK20-80
15 GPM, 2 HP (Consisting of L15P4EH, PID20 & P43B0020A3-C)	S15PIK20-80
90 GPM, 3 HP (Consisting of L90HF20, PID50 & P43B0030A3-C)	S90PIK30-80

Symcom Products

Motor Protectors



231 Insider



Model 777



Model 460



Model 250

Description	Part Number
Insider 1/3 To 1HP-230V	SP231P-INSIDER (MS231-I-P)
SP233 1/3 To 3HP-230V	SP233 (MS233-P)
SP233 1/3 To 3HP-230V	SP233-3R(MS233-3RL-P)
SP235 5 To 15HP-230V	SP235 (MS235)
SP777 3PH 2 To 700 AMPS 230V	SP777 (MS777-P2)
SP777 3PH 2 To 700 AMPS 480V	SP777-HVR
Model 77C 1 phase Motor Protection	SP77C (MS77C)
Model 250A 3 phase Voltage Monitor	MS250A
Model 350 3 phase Voltage Monitor 600V	MS350-600
Model 460 1 phase Voltage Monitor	MS460SP
Model 460 3 phase Voltage Monitor	MS460
SP520CP 3PH 230V	SP520CP2
SP520CP 3PH 460V	SP520CP4
C.T. 50: 5M (Surface Mount)	CT50-5 (SP50:5)
C.T. 75: 5M (Surface Mount)	CT75-5
C.T. 100: 5M (Surface Mount)	SP100:5M (CT100-5)
C.T. 150: 5M (Surface Mount)	CT150-5
C.T. 200: 5M (Surface Mount)	CT200-5
NEMA 3R Enclosure	SP3R

Pump/Motor Protectors

Franklin Sub monitor 3-Phase Protection

Description	Volts	HZ	Model	Weight
SUBMONITOR - STANDARD, 3 AMPS - 359 AMPS	190-600	60/50	5860005000	4
SUBMONITOR - PREMIUM, 3 AMPS - 359 AMPS *	190-600	60/50	5860005100	4

*Includes lightning arrester and 3-year warranty

Coyote Motor Protectors



Coyote 1/3-1HP 115V	COY115
Coyote 1/3-1HP 230V	COY230

Technical Specifications

Model No.	1PH 115V	1PH 230V
Nominal Voltage	115V	230V
HP Rating	1/3-1	1/3-2
Trip Relay	1/4 Second	1/4 Second
Reset Relay	Adjustable 5 min.- 5 hrs.	Adjustable 5 min.- 5 hrs.
Operating Temperature	-20°C to 75°C	20°C to 75°C
Trip % of Normal Load	Adjustable	Adjustable

Submersible Cable

Grounded 140-Twisted Type-TW-Thermoplastic PVC Submersible Pumping System

Electric Cable Spark Tested at UL Required Voltage

AWG Size and Number of Conductors With Ground	Conductor Stranding	Copper Content lbs/mft	Insulation Nominal Thickness	Dim. O.D.	Weight	
14/2	Solid	37.9	0.045"	.345"	69.2	14-2PVC
12/2	Solid	59.3	0.045"	.381"	96.3	12-2PVC
10/2	Solid	94.3	0.045"	.427"	137.9	10-2PVC
8/2	19 Str. X 0.0295"	131.6	0.045"	.519"	188.6	8-2PVC
14/3	Solid	50.8	0.045"	.386"	92.3	14-3PVC
12/3	Solid	79	0.045"	.427"	128.4	12-3PVC
10/3	Solid	125.7	0.045"	.477"	186.5	10-3PVC
8/3	19 Str. X 0.0295"	185	0.045"	.581"	255.6	8-3PVC
6/3	19 Str. X 0.0372"	275	0.060"	.750"	382.6	6-3PVC
4/3	19 Str. X 0.0469"	437.5	0.060"	.858"	567.8	4-3PVC
2/3	19 Str. X 0.0591"	695.4	0.060"	1.007"	876.4	2-3PVC

Grounded 140-Jacketed Thermoplastic PVC Submersible Pumping System

Electric Cable Spark Tested at UL Required Voltage

AWG Size and Number of Conductors With Ground	Conductor Stranding	Copper Content lbs/mft	Insulation Nominal Thickness	Dim. O.D.	Weight	
14/2	7 Str. X 0.0242"	37.3	0.045"	.268" X 0.600"	124.5	14-2FLAT
12/2	19 Str. X 0.0305"	59.4	0.045"	.290" X 0.660"	159.2	12-2FLAT
10/2	19 Str. X 0.0385"	94.2	0.045"	.310" X 0.729"	208.49	10-2FLAT
14/3	19 Str. X 0.0242"	49.6	0.045"	.270" X 0.772"	163.2	14-3FLAT
12/3	19 Str. X 0.0305"	79.2	0.045"	.290" X 0.852"	209.8	12-3FLAT
10/3	19 Str. X 0.0385"	125.6	0.045"	.310" X 0.944"	275.6	10-3FLAT
8/3	19 Str. X 0.0295"	181.4	0.045"	.340" X 1.030"	358.8	8-3FLAT
6/3	19 Str. X 0.0372"	269.6	0.045"	.410" X 1.240"	531.6	6-3FLAT
4/3	19 Str. X 0.0469"	428.9	0.045"	.455" X 1.405"	744.8	4-3FLAT
2/3	19 Str. X 0.0591"	681.8	0.045"	.520" X 1.661"	1,082.7	2-3FLAT

Note: UL Listed-UL File e-105720. Available in 500' Reels. Add 500 to end of number.

Galvanized Fittings

Tee

90° Street Elbow



Size	Box Qty	Part #	Box Qty	Part #
1/4"	50	GT02 (TEE-025)		
1/2"	40	GT05 (TEE-050)		
3/4"	35	GT07 (TEE-075)		
1"	20	GT10 (TEE-100)	30	GSE10 (STREET-ELL90-100)
1 1/4"	14	GT12 (TEE-125)	25	GSE12 (STREET-ELL90-125)
1 1/2"	15	GT15 (TEE-150)		(STREETELL90-150)
2"	10	GT20 (TEE-200)	10	GSE20 (STREET-ELL90-200)
2 1/2"	8	GT25 (TEE-250)		
3"	6	GT30 (TEE 300)		
4"	1	GT40 (TEE-400)		



90° Elbow

45° Street Elbow

45° elbow

Size	Box Qty	Part #	Box Qty	Part #	Box Qty	Part #
1/4"	35	GE02 (ELL90-25)				
1/2"	50	GE05 (ELL90-50)			60	GE405 (ELL45-50)
3/4"	35	GE07 (ELL90-75)			35	GE407 (ELL45-75)
1"	20	GE10 (ELL90-100)			20	GE410 (ELL45-100)
1 1/4"	20	GE12 (ELL90-125)	25	GSE412	20	GE412 (ELL45-125)
1 1/2"	10	GE15 (ELL90-150)	9	GSE415		
2"	8	GE20 (ELL90-200)	10	GSE420		
2 1/2"	6	GE25 (ELL90-250)	9	GSE425		
3"	7	GE30 (ELL90-300)				
4"	1	GE40 (ELL90-400)	1	GSE440		

GALVANIZED FITTINGS

(Hex) Red. Bushing



GB

Size	Box Qty	Part #
1/2" X 1/4"	100	GB0502
3/4" X 1/4"	50	GB0702
3/4" X 1/2"	50	GB0705
1" X 1/4"	50	GB1002
1" X 1/2"	50	GB1005
1" X 3/4"	50	GB1007
1 1/4" X 1/4"	30	GB1202
1 1/4" X 1/2"	30	GB1205
1 1/4" X 3/4"	30	GB1207
1 1/4" X 1"	30	GB1210
1 1/2" X 1/2"	25	GB1505
1 1/2" X 3/4"	25	GB1507
1 1/2" X 1"	25	GB1510
1 1/2" X 1 1/4"	20	GB1512
2" X 3/4"	20	GB2007
2" X 1"	20	GB2010
2" X 1 1/4"	20	GB2012
2" X 1 1/2"	20	GB2015
2 1/2" X 2"	15	GB2520
3" X 1"	12	GB3010
3" X 1 1/4"	12	GB3012
3" X 1 1/2"	12	GB3015
3" X 2"	12	GB3020
3" X 2 1/2"	12	GB3025
4" X 2"	5	GB4020
4" X 3"	5	GB4030
5" X 4"	1	GB5040

(Bell) Red. Coupling



GRC

Size	Box Qty	Part #
1/2" X 1/4"	50	GRC0502
3/4" X 1/4"	30	
1" X 1/4"	45	GRC1002
1" X 1/2"	30	GRC1005
1" X 3/4"	25	GRC1007
1 1/4" X 1"	15	GRC1210
1 1/2" X 1 1/4"	12	GRC1512
2" X 1"	14	GRC2010
2" X 1 1/4"	12	GRC2012
3" X 2"	16	GRC3020
4" X 3"	6	GRC4030

Coupling



GC

Size	Box Qty	Part #
1/4"	40	GC02
3/4"	50	GC07
1"	25	GC10
1 1/4"	16	GC12
1 1/2"	18	GC15
2"	12	GC20

Caps

Square Head Plug



GCA



GP

Size	Box Qty	Part #	Box Qty	Part #
1/8"			300	GP01
1/4"			150	GP02
1/2"	75	GCA05	50	GP05
3/4"	40	GCA07	30	GP07
1"	35	GCA10	20	GP10
1 1/4"	25	GCA12	40	GP12
1 1/2"	25	GCA15	30	GP15
2"	18	GCA20	20	GP20
			16	GP25
			16	GP30

Unions

Crosses



GU



GX

Size	Box Qty	Part #	Size	Box Qty	Part #
1/4"	20	GU02			
1/2"	50	GU05	1"	20	GX10
3/4"	35	GU07	1 1/4"	15	GX12
1"	20	GU10			
1 1/4"	15	GU12	2"	6	GX20
1 1/2"	10	GU15			
2"	6	GU20			
2 1/2"	8	GU25			
3"	7	GU30			
4"	1	GU40			



Galvanized Fittings

Nipples										
Length	1/4"	1/2"	3/4"	1"	1 1/4"	1 1/2"	2"	2 1/2"	3"	4"
Close	GN02	GN05	GN07	GN10	GN12	GN15	GN20	GN25	GN30	GN40
1 1/2"	GN0215	GN0515	GN0715							
2"	GN0220	GN0520	GN0720	GN1020	GN1220	GN1520				
2 1/2"	GN0225		GN0725	GN1025	GN1225	GN1525				
3"	GN0230	GN0530	GN0730	GN1030	GN1230	GN1530	GN2030		GN3030	
3 1/2"			GN0735	GN1035	GN1235	GN1535	GN2035			
4"	GN0240	GN0540	GN0740	GN1040	GN1240	GN1540	GN2040			
4 1/2"			GN0745	GN1045	GN1245		GN2045			
5"	GN0250	GN0550	GN0750	GN1050	GN1250	GN1550	GN2050			
5 1/2"		GN0555	GN0755	GN1055	GN1255	GN1555	GN2055		GN3055	
6"	GN0260	GN0560	GN0760	GN1060	GN1260	GN1560	GN2060	GN2560	GN3060	GN4060
8"			GN0780	GN1080	GN1280	GN1580	GN2080			GN4080
10"			GN07100	GN10100	GN12100	GN15100	GN20100			
12"	GN02120		GN07120	GN10120	GN12120	GN15120	GN20120		GN30120	GN40120

PVC Pipe

CL200 20' Lengths/Pipe

1"	PP1C1S200020
1 1/4"	PP125C20020
1 1/2"	PP150C20020
2"	PP2C1S20020
4"	PP4C1S20020
4 1/2"	PP4.5C1S200

2729		3034		SCH 40	
Size	Part #	Size	Part #	Size	Part #
4" X 10' Solid Pipe	EG27294	4" X 20' Sewer Pipe	EG3034420	3/4" x 20'	
4" X 10' Perf. Pipe	EG2729410	6" X 13' Sewer Pipe	EG3034613	1" x 20'	PP1S4020
				1 1/4" x 20'	PP125S4020
				1 1/3" x 20'	PP150S4020
				2" x 20'	PP2S4020

Stainless (Ideal) Clamp



1/2"-1 1/4"	BM6812
3/4"-1 1/2"	BM6816
3/4"-1 3/4"	BM6820
1"-2"	BM6824
1 5/16"-2"	BM6828
1 9/16"-2 1/2"	BM6832
7/8"-2 3/4"	BM6836



Poly Pipe & Fittings

100' Rolls



1" X 100' Class 160	EGBFB5C1
1 1/4" Class 160	EGBFB6C1
1" X 100' Class 200	EGBFB5C12
1 1/4" X 100' Class 200	EGBFB6C12

300' Rolls



1" X 300' Class 160	EGBFB5C3
1 1/4" X 300' Class 160	EGBFB6C3
1" X 300' Class 200	EGBFB5C32
1 1/4" X 300' Class 200	EGBFB6C32

Poly Pipe 250psi

Size	Part #
1" x 100'	EGBFB5C12Y
1" x 200'	EGBFB5C7Y
1" x 300'	EGBFB5C32Y
1 1/4" x 100'	EGBFB612Y
1 1/4" x 200'	EGBFB67Y
1 1/4" x 300'	EGBFB632Y

	Male Adapter Galvanized	Male Adapter Brass	Poly Couplings Galvanized	Poly Couplings Brass	Rope Adapter Brass
Size	Part #	Part #	Part #	Part #	Part #
1"	SMA100	RBMA1	SI10	BI10	RA100
1 1/4"	SMA125		SI12	BI125	RA125
1 1/4 "X 1"		RBMA11/4X1			
1 1/2"	SMA150	BMA150	SI15		
2"	SMA200	BMA200			
1" X 6"	SKN1X6				
1 1/4" X 6"	SKN11/4X6				

Shur-Align Recommended Maximum Setting Depth VS. Discharge Pressure For SCH 120 Drop Pipe

Recommended Maximum Depth (ft) vs. Discharge Pressure (psi)											
Nominal Pipe Size	OD (In)	Min Wall (In.)	Approx Weight (lbs/ft)	ASTM Water Pressure Rating (psi)	30 psi	40 psi	50 psi	60 psi	Pump HP for 50 psi, 8lbs & max depth	8 lbs Flow Rate (GPM)	Skid Quantity (ft)
1	1.315	0.200	0.45	360	590	570	550	530	5	16	3300
1.25	1.660	0.215	0.63	300	300	490	470	450	5	30	2080
1.5	1.900	0.225	0.75	270	270	450	430	410	8	41	1800
2	2.375	0.250	1.03	240	240	400	380	360	10	69	2100

THE SHUR-ALIGN DROP PIPE'S PATENTED DESIGN HELPS YOU QUICKLY AND SAFELY INSTALL YOUR NEXT SUBMERSIBLE PUMP

The Shur-Align drop pipe has the longest inlet ball in the industry, funneling and aligning the pipe before the threads engage. This eliminates cross threading and speeds up the assembly process.

No coupling is required, reducing the possibility of leaks and assembly time. There is just one thread makeup versus the two required with standard couplings.

Johnson Screens is known around the world for top quality products and service; the Shur-Align drop pipe is no exception, delivering clear and safe drinking water.

The entire joint - not just the coupling is formed from schedule 120 PVC for maximum strength and durability, making installation of submersible pumps quicker and simpler.

Advantages of the Shur-Align drop pipe include:

- No couplings
- Simple alignment and engagement
- Beveled shoulder for easier pump service
- Quick makeup
- Watertight seal



Shur-Align Pipe

Friction Head Loss * (ft water/100 ft of tubing)

Flow (gpm)	1" pipe SCH 120	1.25" pipe SCH 120	1.5" pipe SCH 120	2" pipe SCH 120
5	3.0	0.7	0.3	0.1
7	5.6	1.3	0.6	0.2
10	10.8	2.6	1.1	0.3
15	22.8	5.4	2.4	0.7
20	38.9	9.2	4.1	1.2
25	58.8	13.9	6.3	1.8
30	82.4	19.5	8.8	2.5
35	109.6	26.0	11.7	3.3
40	140.4	33.3	14.9	4.3
45	174.6	41.4	18.6	5.3
50	212.2	50.3	22.6	6.5
55	253.2	60.0	27.0	7.7
60	297.4	70.5	31.7	9.1

Best Practices

- Keep head loss in pump column pipe between 6 & 8 ft per 100 ft of pipe
- Use the table to the left to select the diameter of Shur-Align drop pipe for your application
- Torque arrestors are recommended in all submersible pump installations

Assembly Tips

- Apply a food quality non-petroleum pipe paste sealant approved for PVC, to each thread joint
- Do not pre-assemble pipe lengths. Assemble one length at a time in a vertical position
- Tighten joints 1 to 2 turns beyond finger tight
- **DO NOT OVER-TIGHTEN**
- Avoid using tools which may gouge or damage PVO; this can lead to premature failure

Hazen-Williams Equation

- Water hammer suppressors, 100 psi pressure relief valves (placed within 30 ft of well head), torque arrestors and/or soft start controls are always recommended for PVO pipe (required for 40 HP or higher pumps).
- Drop pipe pump size is limited by the pump weight that the drop pipe can support at a particular well depth as long as all above recommendations are followed.
- Good system design will take into consideration appropriate outlet flow rates and pressure when selecting pump size.
- Information above only applies to Johnson Screens products stored, handled and installed correctly.

PVC PIPE BEHAVIOR AT DIFFERENT TEMPERATURES*

Temp. (F)	40.0	50.0	60.0	70.0	73.4	80.0	90.0	100.0	110.0	120.0	130.0	140.0
Temp. (C)	4.0	10.0	16.0	21.0	23.0	27.0	32.0	38.0	43.0	29.0	54.0	60.0
Conversion Factor	1.4	1.3	1.15	1.04	1	0.88	0.75	0.62	0.51	0.4	0.31	0.22

Source: Plastic Pipe & Fittings Association

PVO pipe exhibits decreasing pressure rating and stiffness with increasing temperature. As with dimensions, the pressure ratings and published pipe stiffness figures for PVC pipe are listed at an operating temperature of 73 F.

To determine the pressure ratings and stiffness of PVO pipe at higher or lower temperatures, multiply the pressure rating or pressure class and the stiffness/deflection by the pipes de-rating factors at the temperature.

An example of a table of PVO pipe de-rating factors is shown above. Consult the manufacturer of your pipe for specific data. The typical upper limit for the continuous use of PVC pipe is to 140 F.

Shur-Align Recommended Maximum Setting Depth VS. Discharge Pressure For SCH 120 Drop Pipe

Schedule 120: Threaded (NPT) PVC Drop Pipe Recommended Maximum Depth
VS. Discharge Pressure 8 fps

Nominal Pipe Size	OD (In)	Min Wall (In.)	Approx Weight (lbs/ft)	ASTM Water Pressure Rating (psi)	30 psi	40 psi	50 psi	60 psi	Pump HP for 50 psi, 8lbs & max depth	8 lbs Flow Rate (GPM)	Skid Quantity (ft)
1	1.315	0.200	0.45	360	590	570	550	530	5	16	3300
1.25	1.660	0.215	0.63	300	510	490	470	450	5	30	2080
1.5	1.900	0.225	0.75	270	470	450	430	410	8	41	1800
2	2.375	0.250	1.03	240	420	400	380	360	10	69	2100
3	3.500	0.350	2.18	220	400	380	360	340	30	154	1040
4	4.500	0.437	3.52	220	410	390	370	340	50	259	680
5	5.563	0.500	5.00	200	370	350	330	310	60	405	400
6	6.625	0.562	7.13	190	350	330	310	290	80	595	340
8	8.625	0.718	11.28	180	330	310	290	270	130	1010	180

Caution should be used if flows are higher than 5 fps since turbulent flow and damaging surge pressures can result. The recommended Max Depth numbers used the ASTM Standard D 1785-05 for water pressure rating.

The pressure ratings shown in the table above are for pipe at 73 degrees Fahrenheit with water only, and utilizing correct fittings for the application. Systems that include flanges or exposure to higher temperatures will require de-rating of the entire system.

Spears PVC Fittings

Sch. 40 PVC-Tee (slip x slip x slip)		Sch. 40 90°EL (slip x slip)	Sch. 40 Coupling (slip)	Sch. 40 PVC Cap	Sch. 40 PVC Female Adapter
Size	Part #	Part #	Part #	Part #	Part #
1/2"	S401005	S406005	S429005	S447005	S435005
3/4"	S401007	S406007	S429007	S447007	S435007
1"	S401010	S406010	S429010	S447010	S435010
1 1/4"	S401012	S406012	S429012	S447012	S435012
1 1/2"	S401015	S406015	S429015	S447015	S435015
2"	S401020	S406020	S429020	S447020	S435020
2 1/2"	S401025	S406025	S429025	S447025	S435025
3"	S401030	S406030	S429030	S447030	S435030
4"	S401040	S406040	S429040	S447040	S435040
5"				S447050	S435050
6"				S447060	S435060
8"				S447080	

Sch. 40 Male Adapter (mipt x slip)	Sch. 40 45° EL (slip x slip)	Sch. 80 Female Adapter (mipt x slip)	Sch. 80 PVC Male Adapter	Galvanized comp. Coupling	
Size	Part #	Part #	Part #	Part #	
1/2"	S436005	S417005			
3/4"	S436007	S417007			
1"	S436010	S417010	S835010	S836010	GCC10
1 1/4"	S436012	S417012	S835012	S836012	GCC12
1 1/2"	S436015	S417015	S835015	S836015	GCC20
2"	S436020	S417020	S835020	S836020	
2 1/2"	S436025	S417025			
3"	S436030				
4"	S436040				
5"	S436050				
6"	S436060				

Hydraulic Derricks

Hunke 3T



The Hunke 3T consists of a 32 ft. high telescoping mast with 10 ft. maximum layback. 6,000 lbs. capacity with a 3-part line.

Hunke 4T



The Hunke 4T consists of a 35 ft. high telescoping mast with 10 ft. maximum layback. 6,000 lbs. capacity with a 3-part line.

Hunke 5T



The Hunke 5T consists of a 36 ft. high telescoping mast with 11 ft. maximum layback. 12,000 lbs. capacity with a 4-part line.

Hunke 6T



The Hunke 6T consists of a 36 ft. high telescoping mast with 11 ft. maximum layback. 12,000 lbs. capacity with a 2-part line. The 6T features a variable displacement hydrostatic pump.

Drilling Supplies

Colorado Silica Sand



Description	Part #
Silica Sand 50#bag 6-9 Mesh	6-9/50
Silica Sand 50#bag 8-12 Mesh	8-12/50
Silica Sand 50#bag 10-20 Mesh	10-20/50
Silica Sand 50#bag 20-40 Mesh	20-40/50
2" Stainless Steel Centralizer	SS2C
4" Stainless Steel Centralizer	SS4C
2" Expandable Locking Plug	WH790009
4" Expandable Locking Plug	WH790013
8" X 12" H.D. Steel Skirt	MO3-18101200
12" X 12" H.D. Steel Skirt	MO3-18131200

2" X 5' Blank Sch40 ASTM-F480	WH255259
2" X 10' Blank Sch40 ASTM-F480	WH246370
2" x 5' .010 Screen Sch40 ASTM-F480	WH255276
2" x 10' .010 Screen Sch40 ASTM-F480	WH255285
2" x 5' .020 Screen Sch40 ASTM-F480	WH255280
2" x 10' .020 Screen Sch40 ASTM-F480	WH255288
2" Pointed Bottom Cap ASTM-F480	WH880884
4" X 5' Blank Sch40 ASTM-F480	WH244346
4" X 10' Blank Sch40 ASTM-F480	WH246366
4"x 5' .010 Screen Sch40 ASTM-F480	WH255290
4"x 10' .010 Screen Sch40 ASTM-F480	WH255286
4"x 5' .020 Screen Sch40 ASTM-F480	WH255293
4"x 10' .020 Screen Sch40 ASTM-F480	WH255287
4" Pointed Bottom Cap ASTM-F480	WH245391

Drilling Fluids

Baroid Drilling Fluids



Description	Part #
Quick Grout 50 lb. bag	201519
E-Z Mud DP 14 lb.	201377
Quick-Trol LV 40 lb.	BarQuikTrol-LV40
Holeplug 3/4" 50lb. bag	BARHOLEPLUG 3/4"
Holeplug 3/8" 50lb. bag	BARHOLEPLUG 3/8"
Casing Seal 50lb. bag	BARCASING SEAL
Aqua Guard 50lb. bag	BARAQUAGUARD
3/8" Pell Plug coated pellets 50lb. bucket	BARPEL-PLUG 3/8"
E-Z Mud Plus 5 Gal.	BAREZ-MUD PLUS
Quikfoam 5 Gal.	BARQUIK-FOAM
Quikgel/50lb. bag	BARQUIK-GEL

All Baroid products are available on request



Notes





INNOVATIVE SOLUTIONS

PUMPS • MOTORS • CONTROLS